

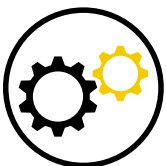


# Proteus

## Waterproofing



THE ONE-STOP  
SOLUTIONS  
COMPANY



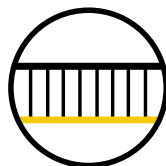
New and  
refurb projects



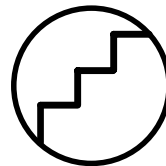
Roofing



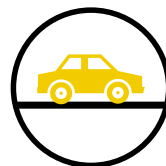
Living roofs



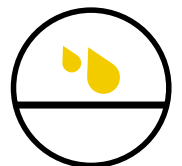
Balconies and  
walkways



Stairwells



Car parks



And more...



# About Us

Proteus Waterproofing is the one-stop-solution provider for local authorities, housing associations and organisations in the private sector – offering a range of high performance solutions to accommodate every requirement and budget. We will solve your problems with a complete service package, and with total project pricing built around you, we will ensure there are no surprises upon project completion.

*Quality British products combined with decades of knowledge and experience.*

Proteus Waterproofing is one of the most innovative and fastest growing companies in the waterproofing market. Using UK engineered and manufactured waterproofing, coating and protection technologies, we provide an ever-growing range of solutions for refurbishments and new builds that are designed to accommodate every need and budget.

Experts in all forms of liquid applied and bituminous membranes for roofing and waterproofing, we are adaptable to each client's individual needs and circumstances. Supported by quality products reinforced by decades of knowledge and experience, we will give your project a durable and reliable, long-lasting waterproofing finish that will last for many years to come.

Complementing the wide range of liquid applied waterproofing systems, Proteus Waterproofing's product offering also includes high performance membranes. These highly flexible systems are market leading in bitumen technology, and can be used as waterproofing overlays and built-up roof systems.





# THE TOTAL SOLUTIONS PACKAGE

## Our extensive product range

Proteus Waterproofing offers market-proven and cost-effective waterproofing solutions for both refurbishments and new builds. Our comprehensive range of lasting and robust systems will ensure the outside of your building is entirely watertight to protect contents, structural integrity and your investment.

Whether you need waterproofing for a communal walkway or a watertight flat roof system, we provide the highest performance waterproofing systems to protect your building. Our product range is highly customisable and each project is supported by a bespoke service package. Starting with a detailed specification, our technical services department will support you to ensure all installations are completed to the highest standards.

We work with you to solve your problems by bringing our market leading waterproofing and repair solutions to you. Our bespoke specification will be tailored to your needs and we'll work closely with our Proteus approved contractors to ensure the highest standard of application – providing a maintenance free solution that comes with guaranteed performance.

The environment is at the forefront of our company philosophy. We continue to research and develop our waterproofing systems to ensure higher performance and greener credentials. Sourcing products from the UK where possible and with a range of systems that incorporates both recycled rubber crumb and organically grown products in their manufacture, we will help to protect the environment and your building for many years to come. Proteus is ISO 9001 and ISO 14001 accredited, and most of our products are BBA or LABC certified.



# INVERTED ROOFS

## COLD MELT®



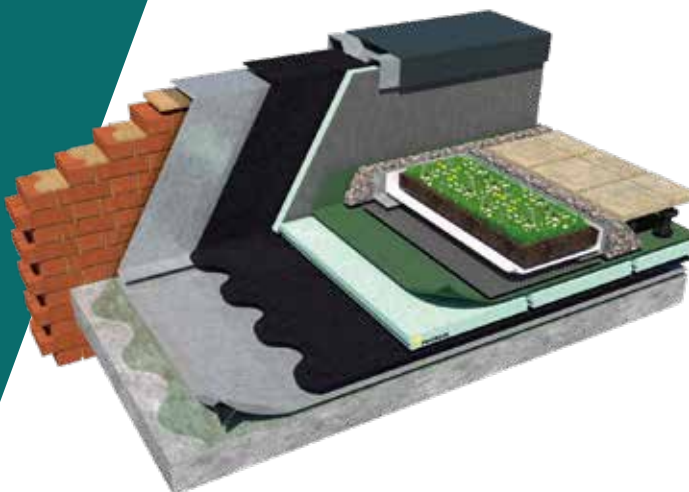
Exclusive to Proteus, Cold Melt® incorporates recycled rubber crumb and other organically grown products to create an elastomeric, seamless, cold applied membrane that can be applied to a wide range of substrates including concrete, asphalt, timber and metal. As it exhibits extremely low odour, Cold Melt® can also be applied in confined working spaces.

With a fast installation that can reduce building programme time, Cold Melt® waterproofing is quick, simple and safe to apply. It is purpose-made to incorporate green and brown roofs and offers an unparalleled seamless cold applied waterproof finish.

The Cold Melt® system can be installed with or without insulation and can be designed as either a podium, paved, ballasted or green roof system. Once protected from UV exposure, Cold Melt® does not become brittle with age and will therefore provide durable waterproofing for the entire design life of the roof in which it is incorporated.

### Benefits

- BBA certified for the design life of the roof
- Highest European fire rating BRoofT4 Certification
- Green Roof and Blue Roof certified
- Extremely low odour
- Cold applied – Eliminating the risk of fire
- Totally seamless
- Elastomeric – does not become brittle with age
- Can be laid over flat decks
- Made in the UK
- Incorporates recycled rubber crumb and other organically grown products







# INVERTED ROOFS

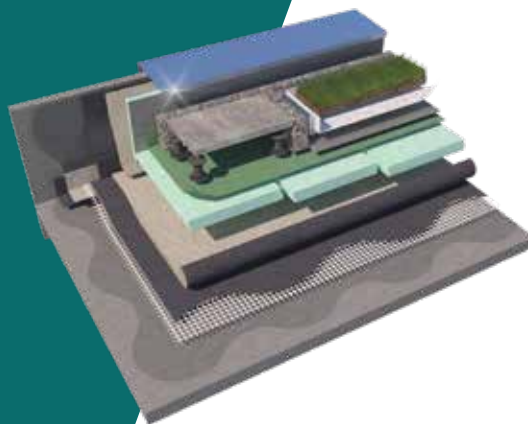
## PROTEUS HOT MELT®

Suitable for large flat roof decks, podiums, paved, ballasted & green roof systems, these systems have been installed on many prestigious developments for more than 40 years, Hot melt systems offer extended life expectancy, excellent waterproofing performance and competitive installation costs.

As a strong, flexible, monolithic and fully bonded system, it also has self healing characteristics to offer ultra-low maintenance. As water cannot track under the membrane, any damage can be traced and repaired quickly and easily. It does not become brittle with age, so once protected from UV exposure, Proteus Hot Melt® will therefore provide durable waterproofing for the entire design life of the roof in which it is incorporated.

### Benefits

- BBA certified for the design life of the roof
- Excellent physical characteristics
- Very quick application process
- Fully bonded membrane
- Very flexible system
- Complementary range of accessories
- Robust membrane





# EXPOSED ROOFS

## PROTEUS PRO-SYSTEM® PLUS



Proteus Pro-System® Plus is our market leading premium, high performance, seamless and cold-applied waterproofing membrane for flat and sloped roofs. The finished product produces a highly engineered seamless waterproof membrane which protects buildings with superb waterproofing performance, durability and UV stability. The product is ideal for both refurbishment overlays and new build projects in conjunction with Proteus Pro-Therm insulation systems. Proteus Pro-System® Plus also fully satisfies the requirements of the NHBC standards 2018.

Proteus Pro-System® Plus does not become brittle, wear away or discolour with age. It uses atmospheric moisture to trigger its cure process and unlike conventional polyurethane systems can cure under water without gassing or foaming. It is also immediately resistant to rain damage as it is laid and may therefore be applied in relatively poor weather without any subsequent loss of performance or durability.

When subjected to normal service conditions, Proteus Pro-System® will provide an effective waterproof barrier for 10, 15, 20 and 25 years dependent on system. All Proteus Pro-Systems can be overcoated at the end of their designed life, therefore reducing costs and preventing product going to landfill.

### Benefits

- Premium product
- BBA certified for 30 years
- Highest European fire rating BRoofT4 Certification
- Extremely Low odour
- Cold applied – eliminating the risk of fire
- Totally seamless
- Elastomeric – does not become brittle with age
- Excellent thermal and UV stability for all climates
- Base and top coats are the same material
- Satisfies the requirements of the NHBC standards



# EXPOSED ROOFS

## PROTEUS PRO-SYSTEM®

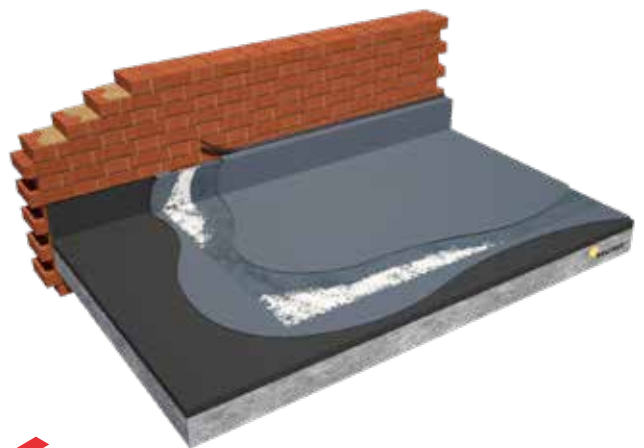
Proteus Pro-System® is a high performance, seamless and cold applied waterproofing membrane for flat roofs, pitched roofs and is used as a waterproofing coating to Proteus' built-up roof systems. Proteus Pro-System® can also be used as a finishing membrane incorporated into Proteus' fully cold applied built-up roof system. It cures to provide completely seamless waterproof protection and has excellent thermal and UV stability, making it suitable for use in all climates.

Proteus Pro-System® does not become brittle, wear away or yellow with age. It uses atmospheric moisture to trigger its cure process and unlike conventional polyurethane systems can cure under water without gassing or foaming. It also becomes resistant to rain damage and may therefore be applied in relatively poor weather without any subsequent loss of performance or durability.

When subjected to normal service conditions, Proteus Pro-System® will provide an effective waterproof barrier for 10, 15, 20 and 25 years dependent on system. All Proteus Pro-Systems can be overcoated at the end of their designed life, therefore reducing costs and preventing product going to landfill.

### Benefits

- BBA certified for 25 years
- Highest European fire rating BRoofT4 Certification
- Cold applied – eliminating the risk of fire
- Totally seamless
- Elastomeric – does not become brittle with age
- Excellent thermal and UV stability for all climates
- Base and top coats are the same material
- Satisfies the requirements of the NHBC standards







# EXPOSED ROOFS

## PROTEUS PRO-COLD®

Proteus Pro-Cold® is a value engineered, single pack, high performance, cold-applied waterproofing membrane for the refurbishment of flat roofs, pitched roofs and a waterproofing coating to Proteus' Built-Up Roof systems.

Once cured, it provides seamless waterproof protection, making it suitable for use in all climates. Proteus Pro-Cold® does not become brittle with age. It is a moisture curing polyurethane system that can cure under water without gassing or foaming. It also becomes quickly resistant to rain damage without loss of performance.

### Benefits

- Value engineered - provides a cost-efficient life cycle extension of failing roofs
- Local Authority Building Control certified – EWS1057 Proteus Pro-Cold®
- BroofT4 fire tested
- Cold applied – eliminating the risk of fire
- Totally seamless
- Elastomeric – retains flexibility even at low temperatures
- Single pack application – ready to use, no mixing necessary
- Good adhesion to most substrates
- Shower proof – Typically the system will be shower proof within 30 minutes
- Easily re-coated when required





# EXPOSED ROOFS

## PROTEUS PRO-FELT®

Proteus Pro-Felt® is a range of high performance bituminous felt products which are high in polymers making them flexible and durable.

Available in the UK from Proteus Waterproofing as part of the company's market leading range of waterproofing, roofing and car park decking solutions, the Proteus Pro-Felt® range of roof systems can be applied quickly and efficiently to meet virtually every client's budget or deadline demands.

### Benefits

- BBA certified for 30 years
- Highest European fire rating BRoofT4 Certification
- Safe2Torch options
- Single layer reinforcement options
- Excellent at low temperatures
- Highly flexible





# BALCONIES AND WALKWAYS

## PRO-BW® PLUS

Pro-BW® Plus is a liquid applied, rapid curing protective membrane that provides a colourfast, UV stable, skid-inhibiting surface for balconies and walkways. Ideal for refurbishment, Pro-BW® Plus reduces installation time from days to hours – with a full system installed and trafficable in less than two hours.

Suitable for applications to asphalt and concrete for communal and private balconies, walkways, staircases and pedestrian ramps, Pro-BW® Plus is flexible, hard-wearing and durable. It is cold applied with no heat required so meets health and safety standards by reducing risk to both operatives and members of the public.

Pro-BW® Plus incorporates fine aggregates to provide a slip-resistant seamless finish yet still providing a surface that is easily cleaned, in a wide range of colours.



### Benefits

- BBA certified for 25 years
- Fast application, fast curing – same day return to service
- Minimal disruption
- Effective for complex detailing around pipes, balustrades etc.
- Skid-inhibiting when aggregates applied
- Durable, up to 20 years to first major maintenance
- A range of standard colours & finishes
- Wide range of substrate applications
- Easily cleaned





# LIVING ROOFS

## PRO-LIVING®

**Pro-Living® from Proteus Waterproofing could be the greenest green roof system ever launched in the UK.**

When specifying or installing a Pro-Living® roof using Proteus' unique Cold Melt® membrane, you are combining environment friendly materials such as recycled rubber crumb and organically grown products with all that nature can offer.

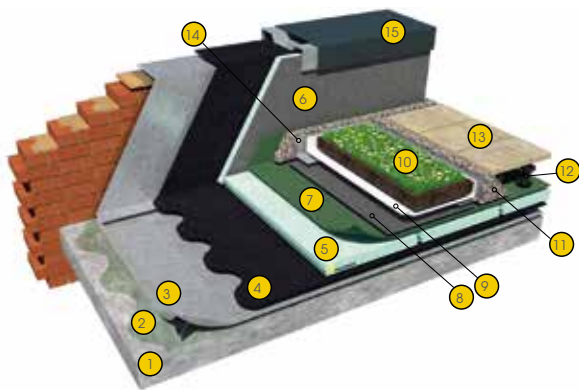
Choosing a Pro-Living® green or bio-diverse system from Proteus can provide ecological benefits and more; energy efficiency is enhanced too. Studies show a building's internal air temperature remains more constant; hotter in winter and cooler in summer meaning air conditioning and heating systems are relied upon less.

Pro-Living® can help you to create a rooftop garden or communal space, a pleasant environment to spend time in. Terraces can offer additional living space when created using a Proteus paving system. Walkways can meander through bio-diversity.

### Benefits

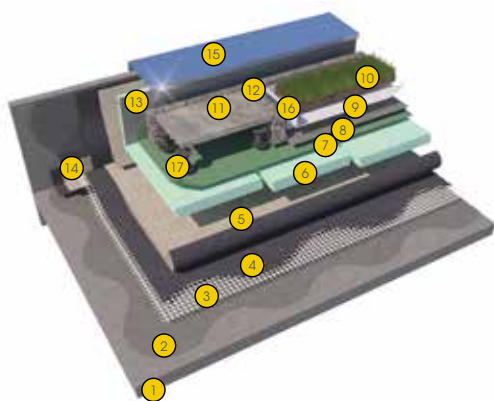
- Reducing problems of water run-off and better storm water management
- Building insulation
- Enhanced aesthetics
- Providing habitats for birds and insects
- Contributing to improvement of urban air quality
- Cooling the urban environment
- Contributing to reduced noise pollution
- Aesthetically improves the look of flat roof areas
- Improves sound absorption by as much as 8db compared with traditional flat roof systems

# PRO-LIVING® PRODUCTS



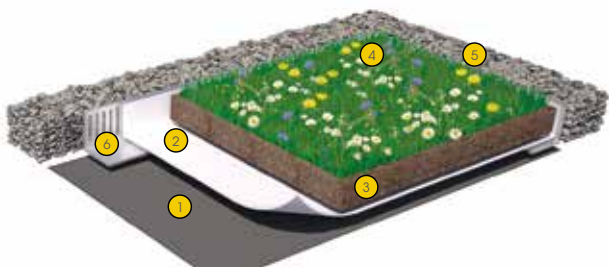
## COLD MELT®

- |                                      |   |
|--------------------------------------|---|
| 1 Deck                               | 9 Proteus Pro-Living® Filter Fleece                       |
| 2 Pro-Prime® SA                      | 10 Proteus Pro-Living® Pre-Cultivated Green Roof Covering |
| 3 Pro-Carrier SA                     | 11 Washed Rounded Ballast                                 |
| 4 Cold Melt®                         | 12 Proteus Pedestal                                       |
| 5 Proteus Pro-Therm XPS              | 13 Hard Landscaping / Paving                              |
| 6 Proteus Cement Topped XPS          | 14 Proteus Pro-Living® Drainage Trim                      |
| 7 Proteus Low-K Water Reducing Layer | 15 Metal Capping  |
| 8 Proteus Pro-Living® Drainage Layer |   |



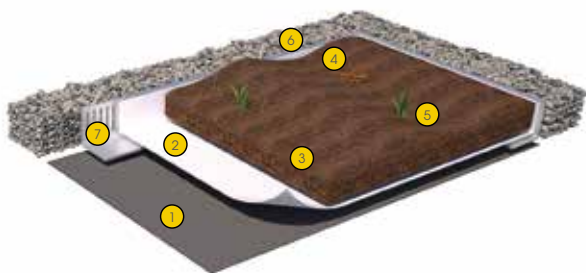
## PROTEUS HOT MELT®

- |  |  |
|--|--|
| 1 Deck   | 9 Proteus Pro-Living® Filter Fleece        |
| 2 Pro-Prime® Bitumen   | 10 Proteus Pro-Living® Green Roof Covering |
| 3 Proteus Hot Melt® Force  | 11 Hard Landscaping / Paving               |
| 4 Proteus Hot Melt® Compound                                     | 12 Washed Rounded Ballast                  |
| 5 Proteus Hot Melt® Sanded Capsheet / Proteus Anti-Root Capsheet | 13 Proteus Cement Topped XPS               |
| 6 Proteus Pro-Therm XPS  | 14 Proteus Hot Melt® Soaker Detail         |
| 7 Proteus Low-K Water Reducing Layer                             | 15 Metal Capping                           |
| 8 Proteus Pro-Living® Drainage Layer                             | 16 Proteus Pro-Living® Drainage Trim       |
|  | 17 Proteus Pedestal                        |



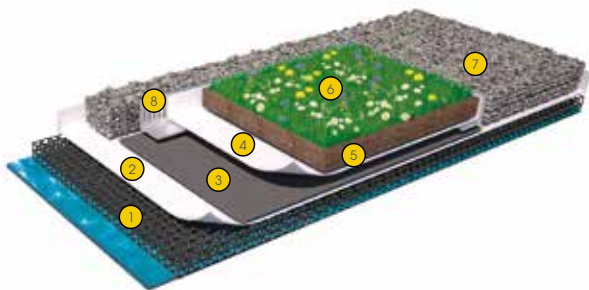
## PRO-LIVING® GREEN ROOFS

- |  |                                     |
|--|-------------------------------------|
| 1 Proteus Pro Living® Drainage / Reservoir Board         | 5 Washed Rounded Ballast            |
| 2 Proteus Pro-Living® Filter Fleece                      | 6 Proteus Pro-Living® Drainage Trim |
| 3 Proteus Pro-Living® Substrate                          |                                     |
| 4 Proteus Pro-Living® Pre-Cultivated Green Roof Covering |                                     |



## PRO-LIVING® BIODIVERSE ROOFS

- |   |                                     |
|---|-------------------------------------|
| 1 Proteus Pro-Living® Drainage / Reservoir Board  | 5 Proteus Pro-Living® Plug plants   |
| 2 Proteus Pro-Living® Filter Fleece               | 6 Washed Rounded Ballast            |
| 3 Proteus Pro-Living® Substrate (Engineered Soil) | 7 Proteus Pro-Living® Drainage Trim |
| 4 Proteus Pro-Living® Log piles                   |                                     |



## PRO-LIVING® BLUE ROOFS

- |   |  |
|---|--|
| 1 Proteus Pro-Living® Reservoir / Water Attenuation Layer | 5 Proteus Pro-Living® Substrate                          |
| 2 Proteus Pro-Living® Filter Fleece                       | 6 Proteus Pro-Living® Pre-Cultivated Green Roof Covering |
| 3 Proteus Pro Living® Drainage / Reservoir Board          | 7 Washed Rounded Ballast                                 |
| 4 Proteus Pro-Living® Filter Fleece                       | 8 Proteus Pro-Living® Drainage Trim                      |



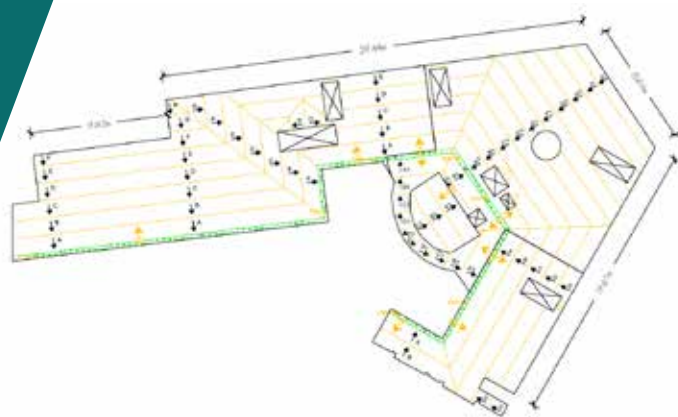
# THERMAL INSULATION

## TAPERED SOLUTIONS

Proteus Pro-Therm CTF schemes are designed on a project specific basis in order to meet any performance and commercial criteria. Our schemes can consist of single or multiple component combined together to create a bespoke tapered design all covered by the Proteus Guarantee and full design liability cover. The materials designed within our CTF schemes are dependent on the specified thermal and fire performance of the project and built to work within any restrictive height parameters. With our diverse range of insulation types, Proteus Pro-Therm CTF is an innovative and flexible solution for flat roofs.

### Benefits

- Bespoke project specific design.
- Warm, Protected and Inverted CTF Solutions.
- Removes the need for falls within timber or concrete/screeded decks
- Designed to meet BS6229: 2018 (minimum falls and thermal performances).
- Bespoke cut to falls available to meet demanding building design criteria.
- Hip, Valley & half boards can be utilised to remove excess waste from the design.
- High performance components utilised when restrictive heights exist.
- Hybrid designs available to ensure all scheme designs meet Part B Fire Building Regulations.

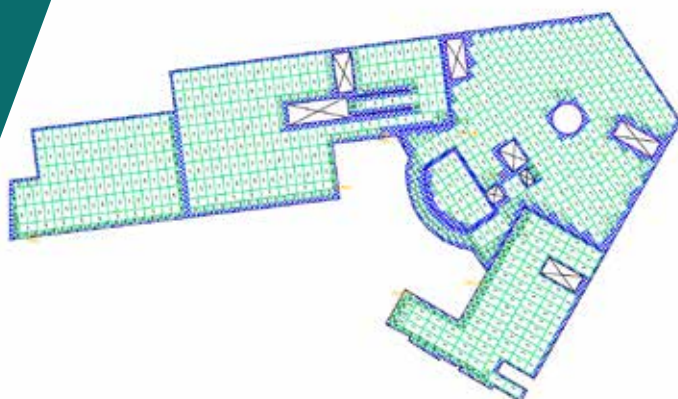


## HIGH PERFORMANCE SOLUTIONS

In addition to the standard Proteus Pro-Therm range, we now offer a number of specialist high performance products which considerably advance the thermal performance of both our flat and tapered insulation schemes. These include a range of high-performance inverted systems and several high-performance warm roof systems which also include non-combustible options.

### Benefits

- Bespoke project specific design.
- Warm, protected and inverted high performance solutions
- Reduced thicknesses to meet demanding threshold and detail heights.
- Designed to meet BS6229: 2018 (minimum falls and thermal performances).
- Can greatly reduce the overall of cost of schemes compared to Vacuum Insulated Panels.
- Hybrid designs available to ensure all scheme designs meet Part B Fire Building Regulations.





# EXTERIOR WALLS

## MONOSIL, MONODEX & MONODEX TEXTURED

### Monosil for concrete, brick and stone

Monosil is a clear masonry impregnator which stops the ingress of rain but at the same time does not block the surface pores of the structure. It allows entrapped moisture to be warmed by the sun, turn to vapour and pass out of the structure over a period of time, enabling it to dry out.

Monosil is invisible to the eye so does not alter the look of the building. It helps to prevent absorption of oils and other liquid contamination allowing for easier removal of contaminants.

### Monodex Smooth – water-based elastomeric decorative coating

Monodex Smooth is a high performance water based, elastomeric, high build, decorative coating which provides protection against carbonation and water ingress, yet allows damp substrates to breathe. It is ultra-fast drying which enables two coat applications to take place on the same day and facilitates year round usage.

It resists the growth of mould and fungi and is ideal both for new construction and refurbishment projects.

### Monodex Textured – high performance, flexible waterborne textured coating

Monodex Textured is a highly engineered, waterborne, single component, acrylic-based decorative wall coating with an attractive textured finish. Due to its high build, textured composition, it is ideal for use on buildings and other structures which have a rough, uneven finish with surface defects and imperfections.

### Benefits

- Brush, roller or spray applied in two coats
- Multi-function protection
- Breathable system
- Minimises maintenance
- Imparts oil & water repellence to mineral substrates
- Enhanced dirt resistance





# CAR PARKS

## DECKMASTER

Available for roof, basement and intermediate decks, Deckmaster provides decks with seamless waterproofing while protecting them from carbon dioxide and chloride ingress. With a rapid installation, Deckmaster offers cost and convenience benefits for both refurbishment and new build projects.

All Deckmaster waterproofing comes with a non-slip surface including a compatible line marking and signage system all of which ensure optimum practicality for all projects. Environmentally friendly with solvent-free, recycled components, Deckmaster can help to meet sustainability targets.

Available in a variety of colours to create colour-coded parking bays, traffic aisles and pedestrian walkways, Deckmaster is the ideal solution when a stunning finish is vital.

### Benefits

- Waterproofing services for roof, basement and intermediate decks
- Solvent-free, recycled materials
- Abrasion resistant
- Compatible line marking and signage system
- Quick application
- Anti-slip



Manufactured in the UK and Europe, Proteus Waterproofing is one of the most innovative, fast growing companies in the waterproofing market. Proteus Waterproofing is a single source systems supplier, with an array of hot and cold-applied waterproofing and protection systems. The company's comprehensive product range is suitable for high performance roofing, balconies, walkways and car parks. It offers a vast range of systems, that have been engineered to meet the harshest of weather conditions and provide a lasting and robust waterproofing solution, in both refurbishments and new builds.

Experts in all forms of liquid applied and bituminous membrane roofing and waterproofing. Proteus Waterproofing is adaptable to each client's individual needs and circumstances, and offers long-term performance product reliability and a simple installation as standard.

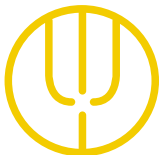
## Total Peace of Mind

Proteus Waterproofing roofing systems are tested to the most rigorous international standards, ensuring they will outperform the initial design life. This will give your project a durable, reliable and long-lasting waterproofing finish, that will last for many years to come, providing excellent value to clients and building owners.

## Guaranteed Performance

Proteus Waterproofing presents clients with a robust choice of guarantees for its bespoke systems, from an offer that also incorporates enhanced independently-backed warranties, for total peace of mind.

For further information, please contact Proteus Waterproofing to discuss the most suitable option to meet your requirements.



### Proteus Industrial Technologies Ltd.

21a Sirdar Road, Brook Road Industrial Estate, Rayleigh, Essex SS6 7XF  
T: +44 (0) 1268 777871

enquiries@proteuswaterproofing.co.uk  
**www.proteuswaterproofing.co.uk**

 @Proteus\_UK

Registered Office: 21a Sirdar Road, Brook Road Industrial Estate, Rayleigh, Essex. SS6 7XF.  
Registered company number: 08258719.

### Proteus Waterproofing's range of lasting and robust systems includes:

- *Liquid-applied waterproofing: Proteus Pro-System® Plus*
- *Inverted roof waterproofing: Cold Melt®, Proteus Hot Melt®*
- *High performance felts: Proteus Pro-Felt®, Ultima, Ultima Plus, Extra, Extra Plus*
- *Balconies and walkways: Pro-BW® Plus, Cold Melt®*
- *Car park decking systems: Deckmaster*
- *Coating protection: Pro-Cryl®, Pro-Solar Reflect*
- *Exterior walls waterproofing: Monosil, Monodex & Monodex Textured*

### The Proteus Waterproofing Specification includes:

- *On-going technical support*
- *Comprehensive guarantees*
- *Free roof evaluations service*
- *Roof condition surveys, reports and bespoke specifications*
- *Expert advice on low maintenance solutions*
- *Site survey and design stage involvement*
- *Thermal value calculations to building regulations part 'L'*
- *Tapered insulation scheme design*
- *Wind uplift calculation*
- *Building regulations Part B (fire) compliance options*

### The Proteus Waterproofing service package includes:

- *Detailed specifications*
- *National contractor base*
- *Technical manager inspections throughout the project*
- *Installation sign off*

