



Proteus
Waterproofing

Cold-Melt® Revit BIM Component user Guide



Proteus Waterproofing - Roofing Systems

The Proteus Waterproofing range of roofing systems have been created as Revit roof build up System Families containing manufacturer specific render materials that can be added to your project by copy paste method from the project download or via a material library (.adsklib file)

You can add the materials into your project using the following methods;

Render images and loading the Material Library into your project

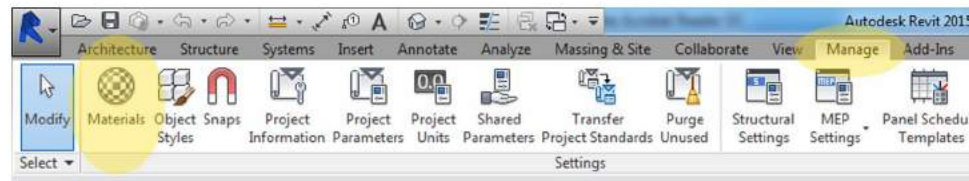
The Proteus Waterproofing system families contain manufacturer specific render materials. Revit will try and find the material images automatically on your computer in the following directory;

C:\LocalRVT\Bimstore\Materials\ProteusWaterproofing

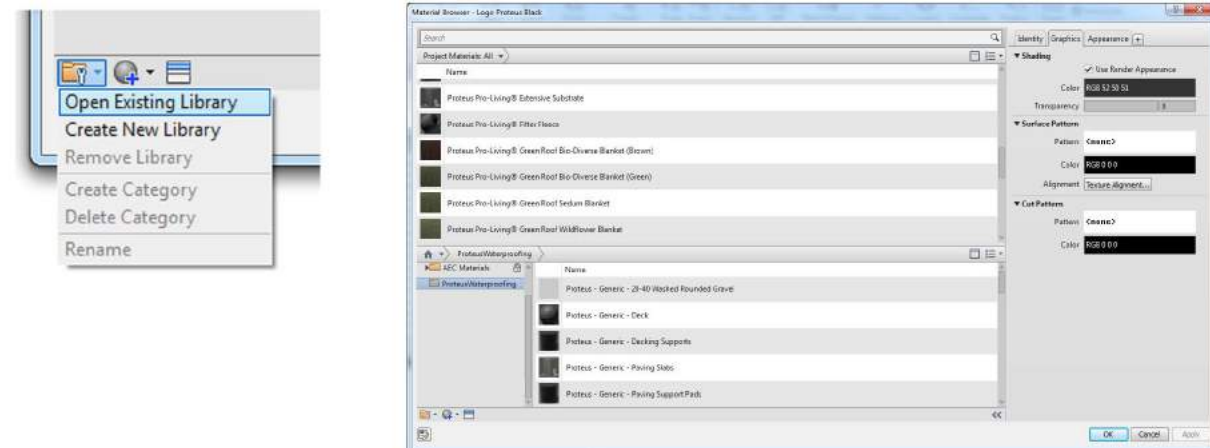
The first time you use these components you will need to copy the images contained in the 'Materials' folder included in the download file, into the above location (you may need to create the folder structure if you have not used bimstore components with custom materials before). The materials will now load the custom render finishes from this location.

Also included in the download file is the Proteus Waterproofing materials library file (.adsklib) and can be accessed by using the following method;

1. Open the Revit file containing your 'project', and navigate to a an appropriate view.
2. Select the 'Materials' icon.



3. Once the 'Material Browser' opens, select the folder icon in the bottom left hand corner and choose 'Open Existing Library'. Then navigate to where you saved the downloaded material library (.adsklib) file and select the Proteus Waterproofing materials library. You can now add your chosen materials into your project.



Loading the roofing component into your project

To load the roofing build ups into your project please use the following method:

1. Open the Revit file containing your 'project' and navigate to a an appropriate view.
2. Open the project that you have downloaded from bimstore. The default view will be a floor plan. Select the roof type you wish to load into your project (Press Ctrl to select multiple types)
3. Now copy the roof type using the 'Copy to Clipboard' tab or using keyboard shortcut Ctrl + C.



4. Return to your project and in a suitable view paste the roof type into your project using the 'Paste' tab or using keyboard shortcut Ctrl + V.



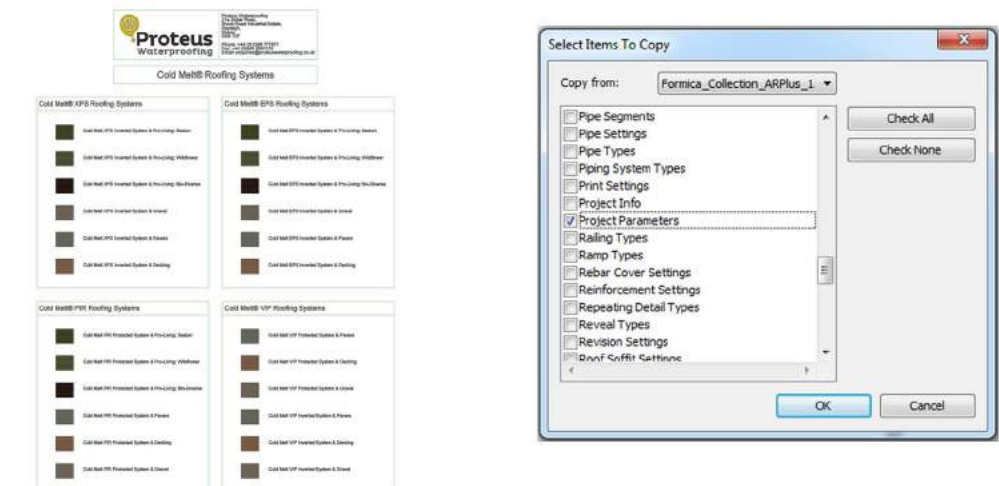
5. The roof type and materials are now embedded into your project and can be selected from the roof types selector within your project BIM. You can delete the items you just pasted into your project and the roof types will remain within the project.
6. The materials can be accessed via the Material Browser and any material parameter data viewed via the Custom Parameter tab in the bottom left hand corner when selecting a material (See Below)

Loading the manufacturer specific data into your project

Finally you need to ensure that all of the manufacturer specific product data relating to the materials comes across into your project. To do this, ensure both projects are open, then navigate to the 'Manage' tab in your project file, then select 'Transfer Project Standards'.

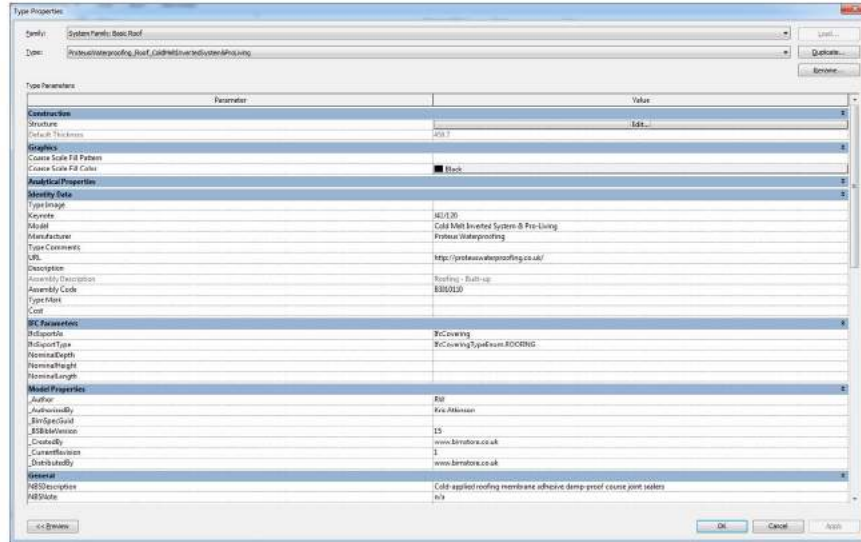
A pop up box will now appear as displayed below. Ensure the 'Copy from:' drop down is selecting the Proteus Waterproofing project you have copied the material from. Then Make sure that the field for 'Project Parameters' is selected and click OK. This will transfer across all of the product specific information.

This method can also be used to transfer the materials from the Proteus Waterproofing project into your model, follow the same method as above but select 'Materials', this will then transfer the Proteus materials and associated data into your project.



Accessing the Proteus Waterproofing product information

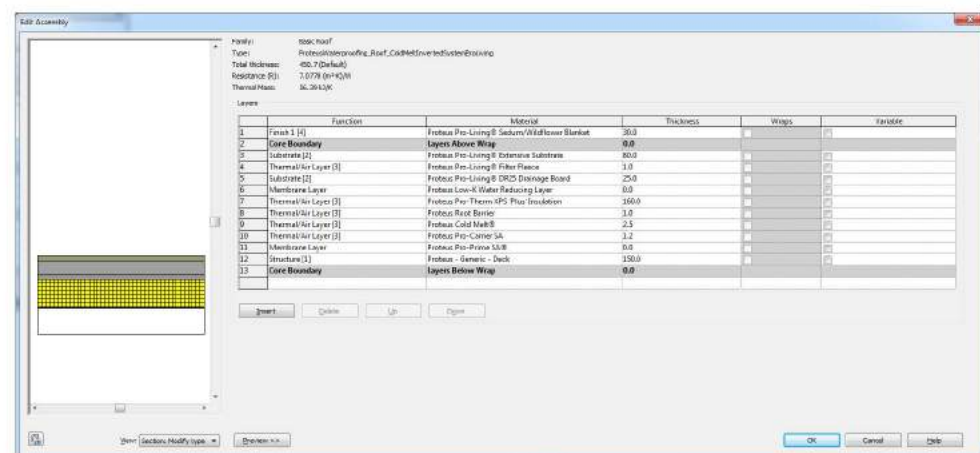
To access the data embedded into the roof components, select the desired component and click the 'Edit Type' button at the head of the 'Properties' dialogue box. All of the product specific information regarding the Proteus Waterproofing roofing system you have selected is now displayed and can be added to schedules, including URL links direct to Renolit for documentation and product links.



Amending the Proteus Waterproofing roofing build ups

The Proteus Waterproofing roof build ups that have been created for you are those approved by the manufacturer. However the build ups can be amended by the user if required. Please note it is recommended that you contact Proteus Waterproofing directly to receive guidance on appropriate alternatives to your roof system build-up. To alter the layers within the roof build up, please follow the below method:

1. Select your roof system, then, in the 'Properties' dialogue box, select the 'Edit Type' button to display the roof system 'Type Properties'
2. Under the 'Construction' heading select the 'Edit' value in the 'Structure' parameter.
3. The roof system build up will now be displayed containing information relating to the build up, materials and thickness's (as illustrated below).

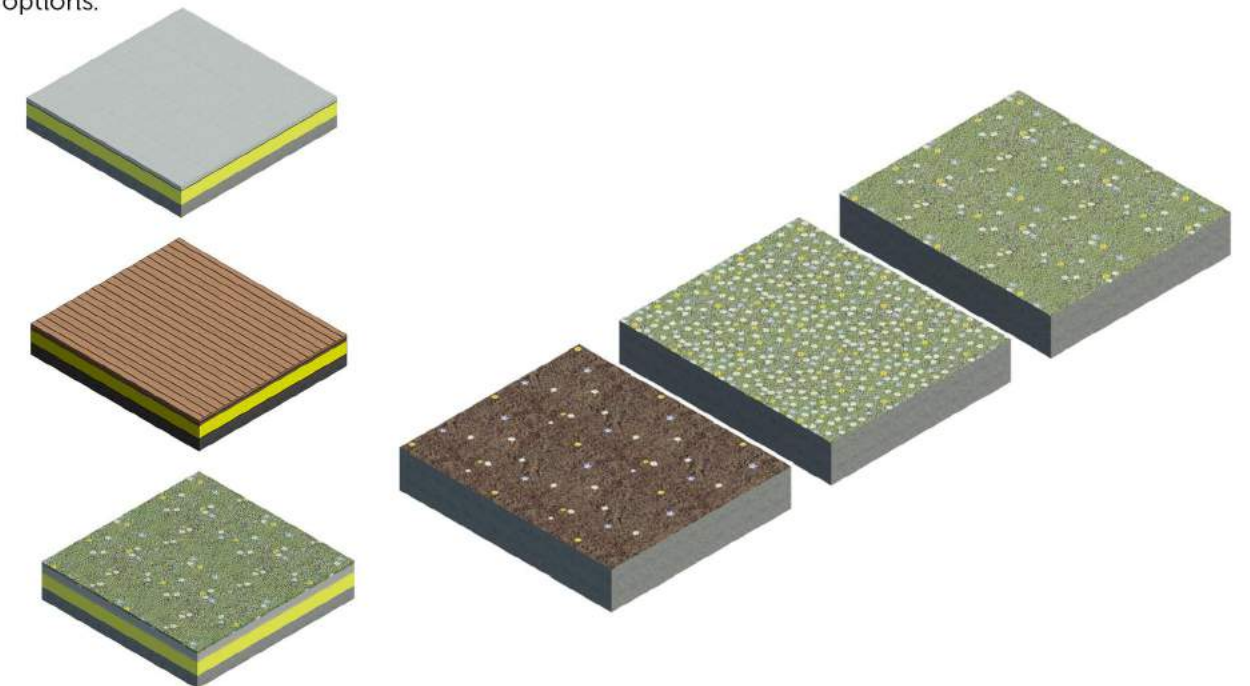


Amending the Proteus Waterproofing roofing build ups

4. The thickness of the layers creating the roof build up are set by Proteus Waterproofing products, however, if you wish to amend the thickness of the insulation, under the 'Thickness' heading, select the material you wish to amend and update to your required thickness. (Always contact Proteus Waterproofing for guidance on suitable products).

	Function	Material	Thickness	Wraps	Variable
1	Finish 1 [4]	Proteus Pro-Living® Sedum/Wildflower Blanket	30.0		
2	Core Boundary	Layers Above Wrap	0.0		
3	Substrate [2]	Proteus Pro-Living® Extensive Substrate	80.0		
4	Thermal/Air Layer [3]	Proteus Pro-Living® Filter Fleece	1.0		
5	Substrate [2]	Proteus Pro-Living® DR25 Drainage Board	25.0		
6	Membrane Layer	Proteus Low-K Water Reducing Layer	0.0		
7	Thermal/Air Layer [3]	Proteus Pro-Therm XPS Plus Insulation	160.0		
8	Thermal/Air Layer [3]	Proteus Root Barrier	1.0		
9	Thermal/Air Layer [3]	Proteus Cold Melt®	2.5		
10	Thermal/Air Layer [3]	Proteus Pro-Carrier SA	1.2		
11	Membrane Layer	Proteus Pro-Prime SA®	0.0		
12	Structure [1]	Proteus - Generic - Deck	150.0		
13	Core Boundary	Layers Below Wrap	0.0		

Typically, the build ups included in the download project include a structural deck, this thickness is generic and can be adjusted to suit your project, by following the above method, or the layer removed from your build up if not required. The same also applies to the generic decking, gravel and paving options.



Other Notes

These components are for design intent only and the data contained within should be treated as such. Please contact the manufacturer for more details and product literature.

You can add this component to your company template file, they will then be available without loading when starting a new project.

Revisions

Version 1.0 - First Issue

bimstore.co.uk

North East
Spaceworks
Benton Park Road
Newcastle Upon Tyne
NE7 7LX

T: +44 (0)191 223 6600
F: +44 (0)191 223 6610



Proteus Industrial Technologies Ltd.

21a Sirdar Road, Brook Road Industrial
Estate, Rayleigh, Essex SS6 7XF

T: +44 (0) 1268 777871
F: +44 (0) 845 2991215

enquiries@proteuswaterproofing.co.uk
www.proteuswaterproofing.co.uk

 @Proteus_UK