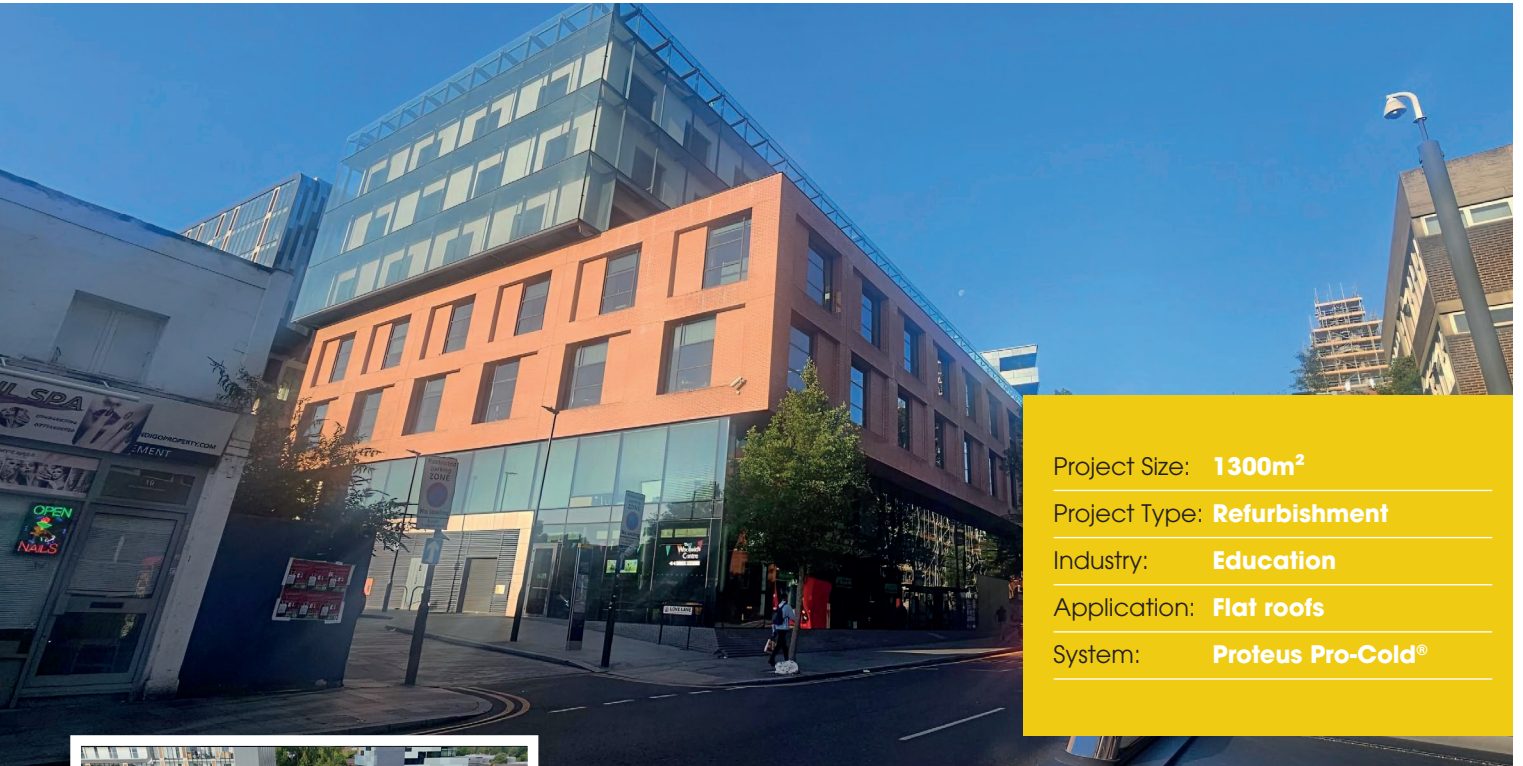


# The Woolwich Centre



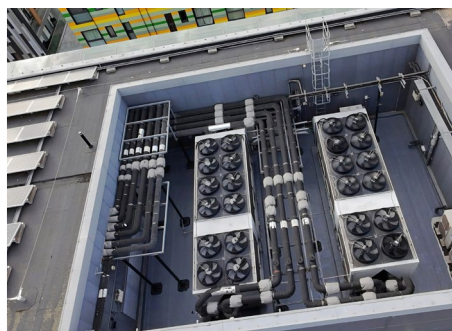
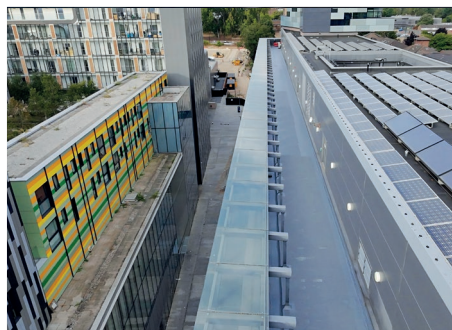
Project Size: **1300m<sup>2</sup>**

Project Type: **Refurbishment**

Industry: **Education**

Application: **Flat roofs**

System: **Proteus Pro-Cold®**



## Project Overview

The Woolwich Centre is a local hub offering council services and library facilities. The roofs of the building were providing water ingress issues.

A long-standing contractor for the local authority client was approached for a solution and they, in turn, asked Proteus Waterproofing® to advise on the correct system to be used.

Proteus carried out a roof survey and found the roof, after repairs, to be in a suitable condition for an overlay system to be considered.

Proteus Pro-Cold®, a flame free liquid reinforced waterproofing system, was specified.

## Key Challenges & Solutions

The detailing to metal posts was challenging. Due to their design, standard jubilee clips to terminate the system could not be used and instead, bespoke sealing bands were constructed on site for use.

To minimise disturbance to staff all works were conducted out of office hours.

## Conclusion

All areas were completed to a high standard using our Proteus Pro-Cold® system.

The established strong partnership between contractor and material supplier ensured the client was delivered the roof to the highest standards without problem.

### Proteus Waterproofing Limited

21a Sirdar Road  
Brook Road Industrial Estate  
Rayleigh  
Essex SS6 7XF

Tel: 01268 777 871  
Email: [enquiries@proteuswaterproofing.co.uk](mailto:enquiries@proteuswaterproofing.co.uk)  
[www.proteuswaterproofing.co.uk](http://www.proteuswaterproofing.co.uk)

**Design | Develop | Deliver**

