

London Museum, Smithfield

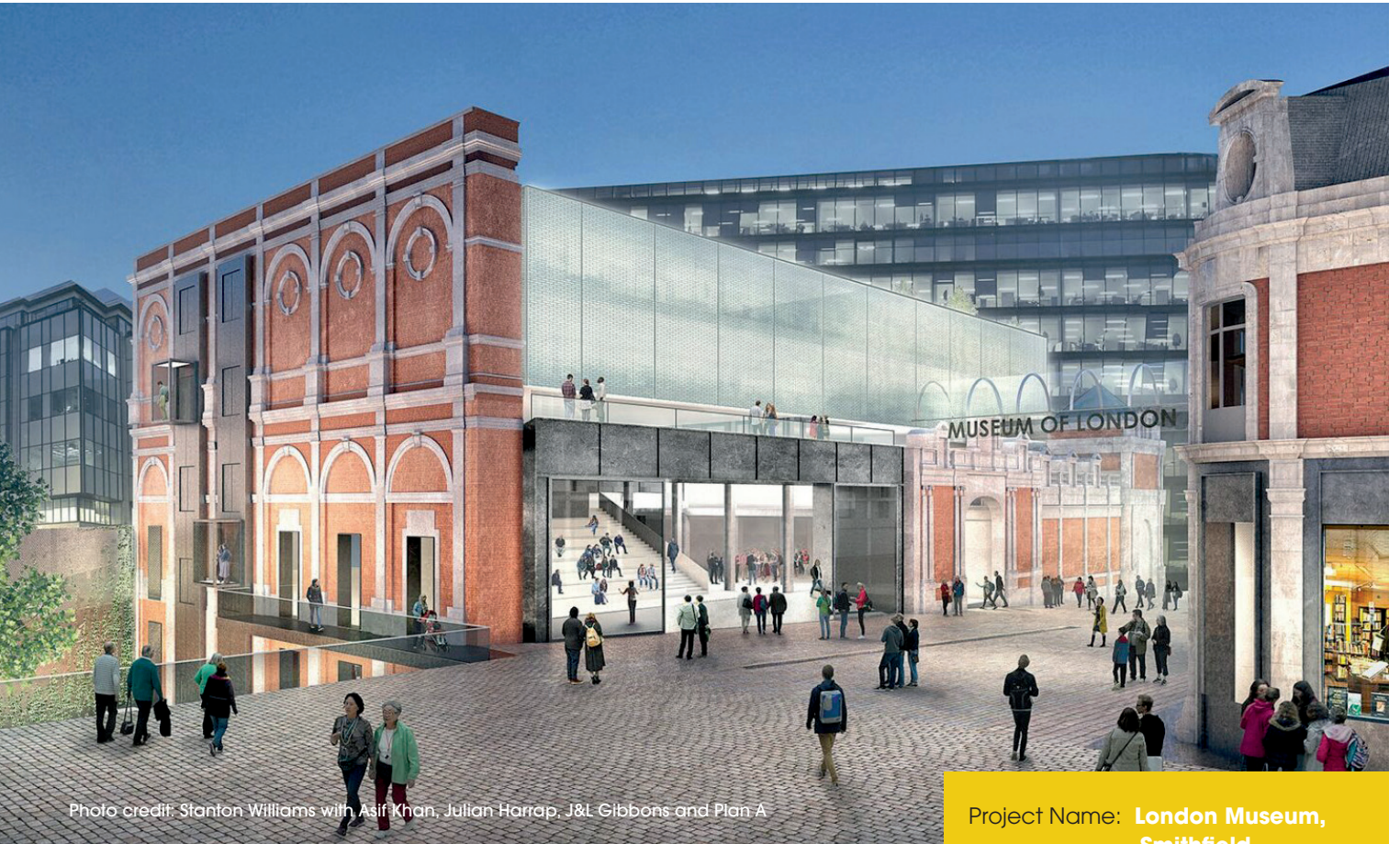


Photo credit: Stanton Williams with Asif Khan, Julian Harrap, J&L Gibbons and Plan A

The new London Museum project in Smithfield, being delivered by Sir Robert McAlpine, is transforming the historic Victorian General Market and Poultry Market buildings into a major new cultural destination, with the first phase scheduled to open towards the end of 2026.

The overall works involve adaptive reuse of the Victorian buildings, with elements like new mezzanine levels, CLT roofing, a biodiverse roof on the General Market, and public realm improvements.

Construction is well underway, with the full site (including the Poultry Market phase) expected around 2028.

All areas with a green roof have been waterproofed by Proteus, using **Pro-BW® Plus**. The waterproofing was used for ease of detailing with a large number of interfaces including new glazed lights, existing facades together with plant rooms.

We have worked with Proteus Approved Contractors to deliver on this extensive project, including Athena (via Payesone), Four Metal Jackets, Knight Asphalt, and Alltech.

Project Name: **London Museum, Smithfield**

Project Type: **New Build**

Industry: **Commercial**

Application: **Pro-BW® Plus**

The concept visualisations of the completed redevelopment include new public spaces, modern interventions (like glass extensions and roofs), biodiverse elements, and how the historic fabric integrates with contemporary design.

It will be part of the City of London's Culture Mile, aiming to create a vibrant 24-hour destination with galleries, events, and public areas.

Proteus Waterproofing Limited

21a Sirdar Road
 Brook Road Industrial Estate
 Rayleigh
 Essex SS6 7XF

Tel: 01268 777 871

Email: enquiries@proteuswaterproofing.co.uk
www.proteuswaterproofing.co.uk

Design | Develop | Deliver

