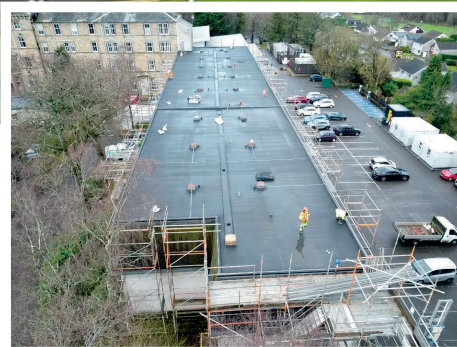


# Hilton Dunblane Hydro Hotel

Project Size: **1000m<sup>2</sup>**  
 Project Type: **Refurbishment**  
 Industry: **Leisure**  
 Application: **Flat roofs**  
 System: **Proteus Pro-Felt®  
Ultima Plus  
Proteus Pro-Therm PIR**



## Project Overview

Proteus Waterproofing® was asked by Hilton Hotels to survey the Accommodation Annexe block at the Doubletree by Hilton Dunblane Hydro Hotel. Core samples showed the existing roof was constructed of a metal deck, Rockwool insulation and waterproofed with a single ply. Core samples showed the insulation to be saturated with entrapped water caused by roof leaks through the single-ply membrane.

## Key Challenges & Solutions

Proteus Waterproofing® provided a bespoke roof specification to remove the existing roof coverings back to the structural deck and install a new Built-up Roof system comprising of new Rockwool

(non-combustible) insulation meeting the current building regulation requirement of 0.18 U-Value. The insulation was then waterproofed with the two-layer Proteus Pro-Felt® Ultima Plus system, BBA certified for a minimum 30 years.

### Proteus Waterproofing Limited

21a Sirdar Road  
 Brook Road Industrial Estate  
 Rayleigh  
 Essex SS6 7XF

Tel: 01268 777 871  
 Email: [enquiries@proteuswaterproofing.co.uk](mailto:enquiries@proteuswaterproofing.co.uk)  
[www.proteuswaterproofing.co.uk](http://www.proteuswaterproofing.co.uk)

**Design | Develop | Deliver**

