




## PROTEUS PRO-FELT® SYSTEMS

- *High performance built-up bituminous membrane systems*
- *Cold flexibility (down to -25 C)*
- *Lasts up to 35 years*
- *Torch-on & self adhesive applications*





The Proteus Pro-Felt® Range uses advanced self-adhesive and low melt bitumen technologies which ensure the products benefit from a fast and efficient installation both in refurbishment and new build situations – to meet every client’s budget and deadline demands.

- **Highly flexible**
- **Environmentally friendly**
- **Excellent at low temperatures**
- **Guaranteed up to 25 years**
- **Available in a variety of colours**
- **Compliant with the stringent requirements of Swiss Norm**
- **All membranes are individually CE Marked**
- **Excellent waterproofing choice for intensive and extensive Green and Bio-diverse Roofs**
- **BBA certified**

*Please note some components are made in other parts of Europe*

The new Proteus Pro-Felt® range of Roof Systems from Proteus Waterproofing offers a high performance range of bituminous membranes, with an exceptionally high SBS content making them extremely flexible and durable.

Manufactured in Switzerland\* to meet the country’s rigorously demanding standards, Proteus Pro-Felt® leads the market in bitumen technology, consistently outperforming alternatives throughout its whole lifecycle.

The content of SBS polymers contained in Proteus Pro-Felt® enables our products to excel at high altitude temperature extremities that are integral to the Swiss domestic market, and so able to easily withstand UK conditions.

Proteus Pro-Felt® is exclusively available from Proteus Waterproofing as part of the company’s market leading range of waterproofing, roofing and car park solutions. The Proteus Pro-Felt® product range gives clients a long-lasting and robust waterproofing membrane, whilst providing whole ‘built up system’ solutions which include high performance thermal insulations and tapered roofing designs.

*\*Please note some components are made in other parts of Europe*



# FIRE SAFETY: SAFE 2 TORCH



Proteus Waterproofing is a registered member of the national Safe2Torch campaign, a risk assessment strategy from the National Federation of Roofing Contractors, designed to reduce the risk of roof fires from gas torches when installing new membranes.

In conjunction with Safe2Torch, Proteus offers guidance at the initial survey and design stage to ensure all risks are factored into the roofing specification before it is written. A simple and easy-to-use checklist is also available to contractors on site to determine whether or not it's safe to use a torch-on system.

It means we are committed to:

- **Highlighting and reporting specifications which do not conform to Safe2Torch**
- **Identifying and reducing the risk of roof fires caused by gas torches**
- **Ensuring all employees are trained in the use of gas torches and their associated risks**
- **Ensuring all supervisors or charge hands have completed the Safe2Torch checklist prior to hot works commencing.**



# PRO-FELT ULTIMA PLUS FIREGUARD

A High Performance Plastomeric Torch Applied membrane which excels as a direct waterproofing overlay or as part of a Proteus Pro-Felt Warm roof build-up incorporating a Proteus Pro-Therm insulation.

## BUILD UP

- 1 Pro-Felt Primer
- 2 Pro-Felt Air-Vapour-Control
- 3 Pro-Bond Adhesive (Cold Bond)
- 4 Proteus Pro-Therm Insulation
- 5 Angle Fillet
- 6 Pro-Felt Underlay
- 7 Pro-Felt Ultima Plus Fireguard Mineral Cap Sheet

## KEY FEATURES

- **BBA Certified for a minimum 30 years**
- **Tested to Broof(t4) fire performance with enhanced fire-retardant properties.**
- **25 year Proteus Guarantee with Independent Pre-Paid Insurance Backing** (see separate T&C's)

## ACCREDITATIONS AND APPROVALS

- **All products are certified to ISO 9001 and 14001 accreditation**
- **CE marked**



# PRO-FELT ULTIMA PLUS

A High-Performance cost effective Plastomeric Torch Applied membrane which excels as a direct waterproofing overlay or as part of a Proteus Pro-Felt Warm roof build-up incorporating a Proteus Pro-Therm insulation.

## BUILD UP

- 1 Pro-Felt Primer
- 2 Pro-Felt Air-Vapour-Control
- 3 Pro-Bond Adhesive (Cold Bond)
- 4 Proteus Pro-Therm Insulation
- 5 Angle Fillet
- 6 Pro-Felt Underlay
- 7 Pro-Felt Ultima Plus Mineral Cap Sheet

## KEY FEATURES

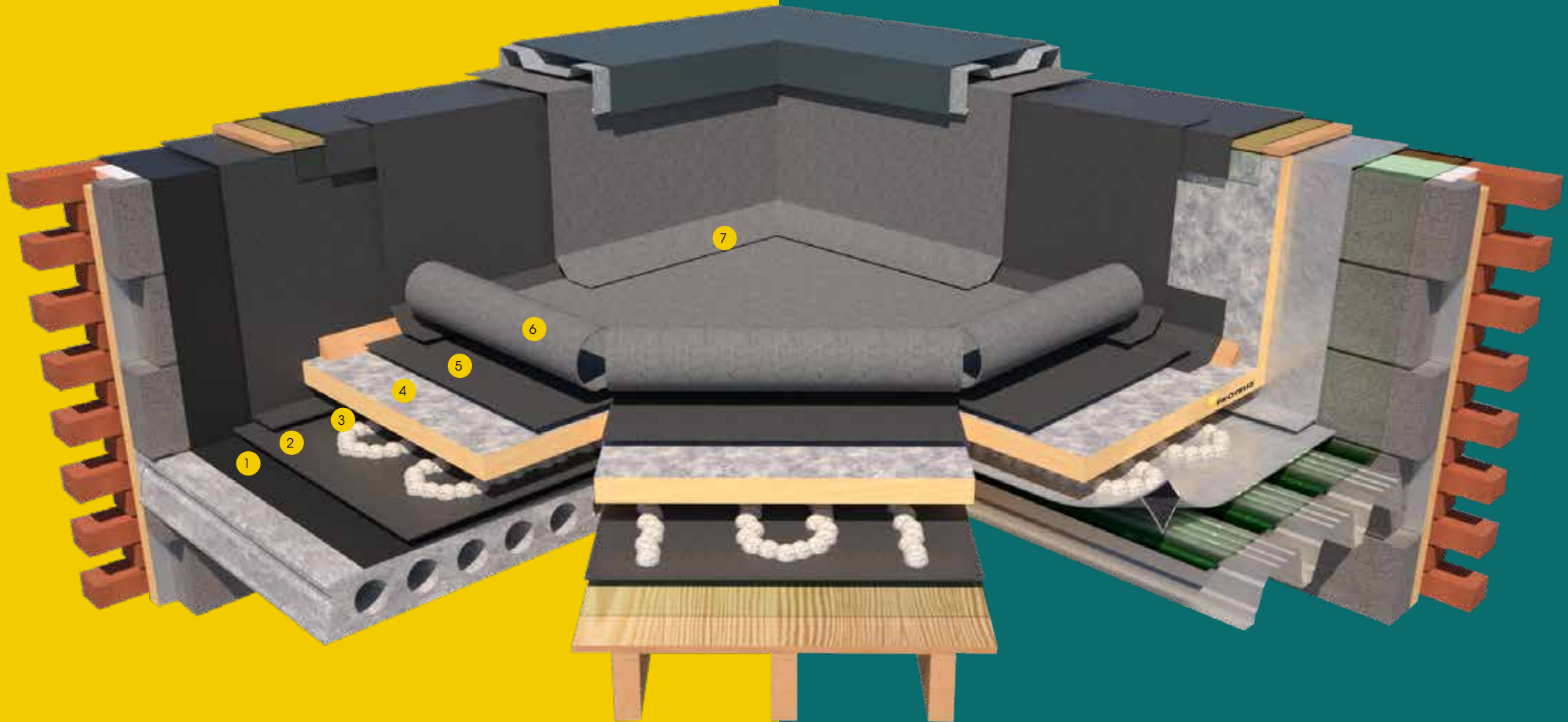
- **BBA Certified for a minimum 30-year**
- **Tested to Broof(t4) fire performance**
- **4mm Black Mineral Cap Sheet**
- **20 year Proteus Guarantee with Independent Pre-Paid Insurance Backing** (see separate T&C's)

## ACCREDITATIONS AND APPROVALS

- **All products are certified to ISO 9001 and 14001 accreditation**
- **CE marked**

# PRO-FELT ULTIMA PLUS FIREGUARD

# PRO-FELT ULTIMA PLUS





# PRO-FELT EXTRA PLUS

A High Performance SBS (Styrene Butadiene Styrene) Torch Applied membrane that excels as a direct waterproofing overlay or as part of a Proteus Pro-Felt Warm roof build-up incorporating a Proteus Pro-Therm insulation.

## BUILD UP

- 1 Pro-Felt Primer
- 2 Pro-Felt Air-Vapour-Control
- 3 Pro-Bond Adhesive (Cold Bond)
- 4 Proteus Pro-Therm Insulation
- 5 Angle Fillet
- 6 Pro-Felt Underlay
- 7 Pro-Felt Extra Plus Mineral Cap Sheet

## KEY FEATURES

- *Tested to Broof(t4) fire performance*
- *5Kg Black Mineral Cap Sheet*
- *20-year Proteus Waterproofing Guarantee*

## ACCREDITATIONS AND APPROVALS

- *All products are certified to ISO 9001 and 14001 accreditation*
- *CE marked*



# PRO-FELT EXTRA

A cost effective Plastomeric Torch Applied membrane which excels as a direct waterproofing overlay or as part of a Proteus Pro-Felt Warm roof build-up incorporating a Proteus Pro-Therm insulation.

## BUILD UP

- 8 Pro-Felt Primer
- 9 Pro-Felt Air-Vapour-Control
- 10 Pro-Bond Adhesive (Cold Bond)
- 11 Proteus Pro-Therm Insulation
- 12 Angle Fillet
- 13 Pro-Felt Underlay
- 14 Pro-Felt Extra Plus Mineral Cap Sheet

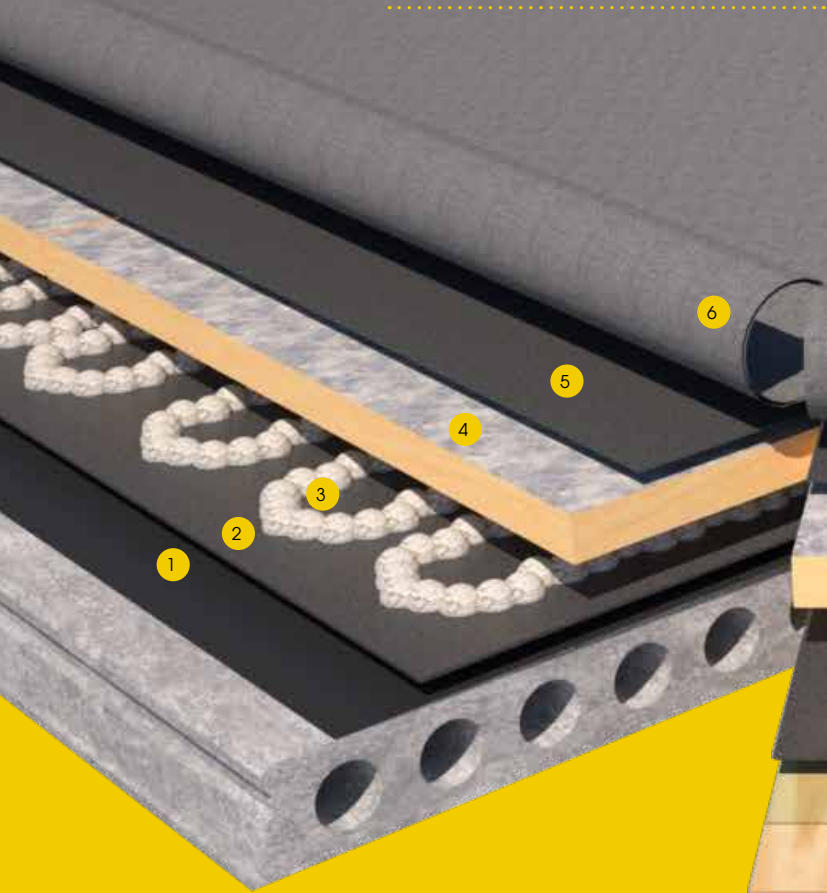
## KEY FEATURES

- *BBA Certified*
- *Tested to Broof(t4) fire performance*
- *4.5KG Black Mineral Cap Sheet*
- *15-year Proteus Waterproofing Guarantee*

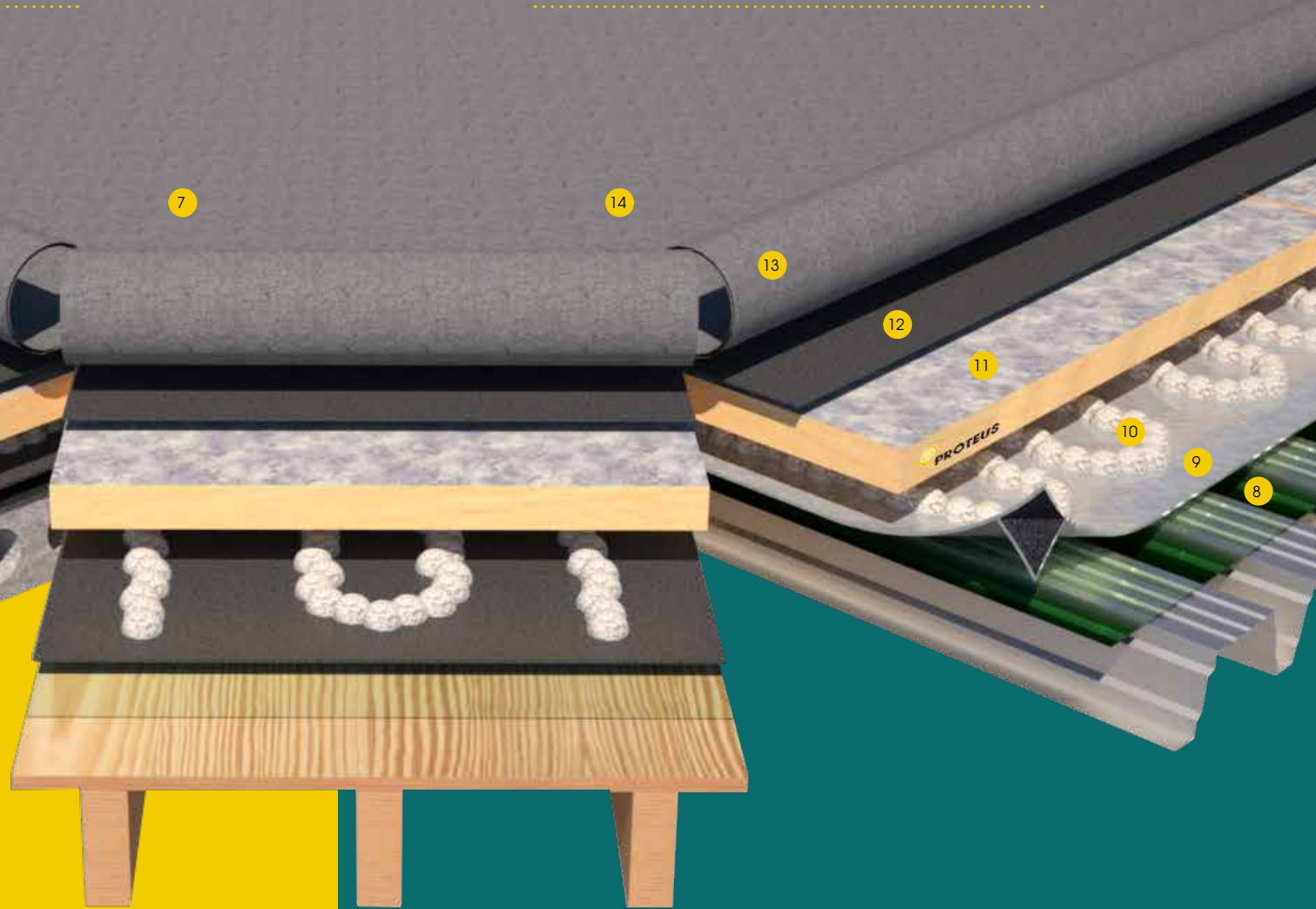
## ACCREDITATIONS AND APPROVALS

- *All products are certified to ISO 9001 and 14001 accreditation*
- *CE marked*

# PRO-FELT EXTRA

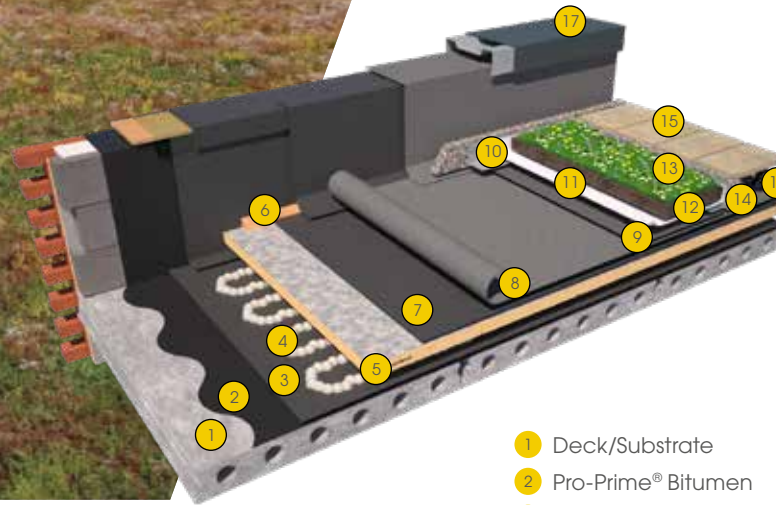


# PRO-FELT EXTRA PLUS



# PROTEUS PRO-LIVING®

## PRO-LIVING® COLD APPLIED BUR GREEN ROOF



- 1 Deck/Substrate
- 2 Pro-Prime® Bitumen
- 3 Pro Air Vapour Control
- 4 Pro-Bond foaming

- 5 Proteus Pro-Therm PIR
- 6 Angle fillet
- 7 Pro-Living® drainage layer
- 8 Proteus Pro-Felt® SA underlay DS
- 9 Proteus Pro-Felt® SA mineral capsheet
- 10 Drainage trim
- 11 Pro-Living® filter fleece
- 12 Growing medium
- 13 Pro-Living® sedum/wildflower
- 14 20-40 wash cobbles
- 15 Spartan tiles
- 16 Proteus Pro-Pedestal Self Levelling Adjustable Paving Pedestal
- 17 Coping System

### Pro-Felt Anti Root Cap sheet

This felt membrane has a root resistant certification and is a key component within the Proteus Pro-Living Green Roof package.

It means it can be laid under a green or blue roof or in any other covered or buried roof application as any roots from vegetation above it will not be able to grow through or penetrate the felt membrane.

Please Note: In such installations the roof must have a minimum fall of 1:60.

Choosing a Pro-Living® green or bio-diverse system from Proteus can provide ecological benefits and more; energy efficiency is enhanced too. Studies show a building's internal air temperature remains more constant; hotter in winter and cooler in summer meaning air conditioning and heating systems are relied upon less.

Pro-Living® can help you to create a rooftop garden or communal space, a pleasant environment to spend time in. Terraces can offer additional living space when created using a Proteus paving system. Walkways can meander through bio-diversity.

### Benefits

- *Reducing problems of water run-off and better storm water management*
- *Building insulation*
- *Enhanced aesthetics*
- *Providing habitats for birds and insects*
- *Contributing to improvement of urban air quality*
- *Cooling the urban environment*
- *Contributing to reduced noise pollution*
- *Aesthetically improves the look of flat roof areas*
- *Improves sound absorption by as much as 8db compared with traditional flat roof systems*



# PRO-LIVING® PRODUCTS

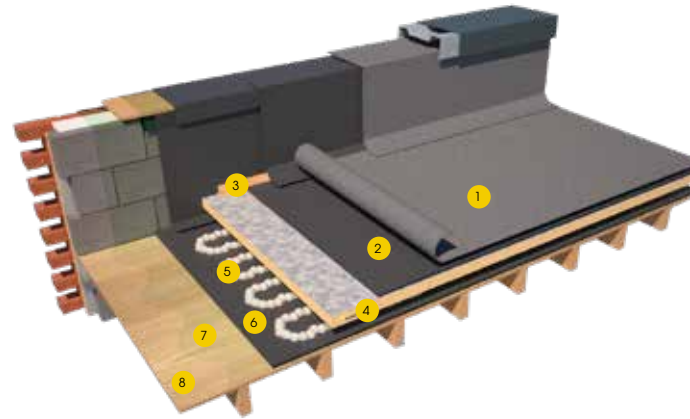
## PRO-FELT COLD APPLIED SELF-ADHESIVE BUILT UP ROOF SYSTEM

A total self-adhesive System from vapour barrier to mineral cap sheet makes Pro-Felt SA particularly suitable for installation over timber decks and in areas where there is the risk of fire as it is fire rated to BroofT4.

A unique self-adhesive twin sided underlay allows the mineral cap sheet and underlay to weld together forming a monolithic elastomeric membrane. With no Self-adhesive primer required, installation time and costs are reduced.

### Benefits

- **Ideal for roof areas where a torch application is not safe.**
- **Faster and more cost effective than conventional two layer/Built-up self-adhesive felt systems to install.**



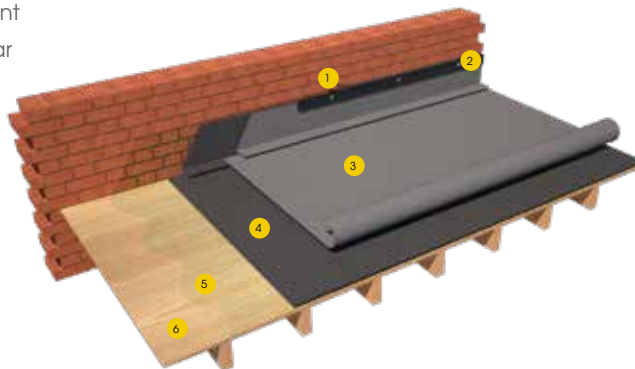
- 1 Proteus Pro-Felt® SA mineral capsheet
- 2 Proteus Pro-Felt® SA underlay DS
- 3 Angle fillets
- 4 Proteus Pro-Therm Insulation PIR
- 5 Pro-Bond foaming
- 6 Proteus Pro-Felt®
- 7 Pro-Prime® SA
- 8 Timber deck

## PRO-FELT COLD APPLIED 2 LAYER OVERLAY SYSTEM

All Pro-Felt Mineral Cap sheets can be combined with the complete range of Pro-Felt underlays to meet client expectations for new or existing roof covering.

Note: To meet Building Guidelines a two-layer membrane should only be installed to an existing roof meeting minimum 0.35W/m<sup>2</sup>K U-Value or over a construction not heated or occupied.

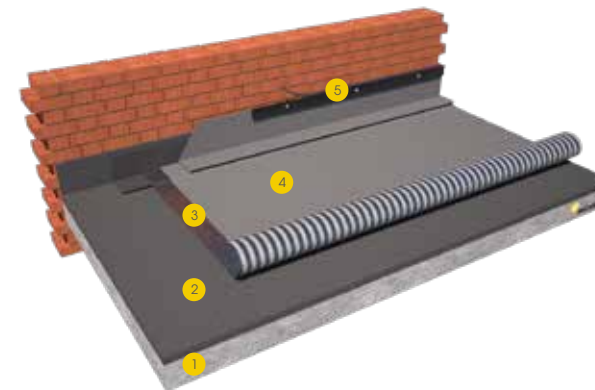
- 1 Proteus bitumen sealant
- 2 Proteus termination bar
- 3 Proteus Pro-Felt® mineral capsheet
- 4 Proteus Pro-Felt® underlay SA
- 5 Pro-Prime® SA
- 6 Timber deck



## PRO-FELT SL (SINGLE-LAYER) DISPERSION MINERAL CAP SHEET

This single layer waterproofing is designed to be installed over an existing roof construction coming to the end of its life avoiding the more costly option of removal and complete renew. This overlay option as a single layer protection meets Building Control Guidelines without the requirement to improve roof insulation, while providing minimum disruption to the building occupiers.

Pro-Felt SL is a partial bonded mineral cap sheet that allows moisture and vapour within the existing roof build-up to disperse under the new Pro-Felt SL rather than building-up in one place under an otherwise fully bonded new membrane, reducing the risk of blistering or failure



- 1 Structural Deck
- 2 Existing Waterproofing
- 3 Proteus Pro-Felt® Underlay to all details
- 4 Proteus Pro-Felt SL Dispersion Mineral Cap Sheet
- 5 Termination

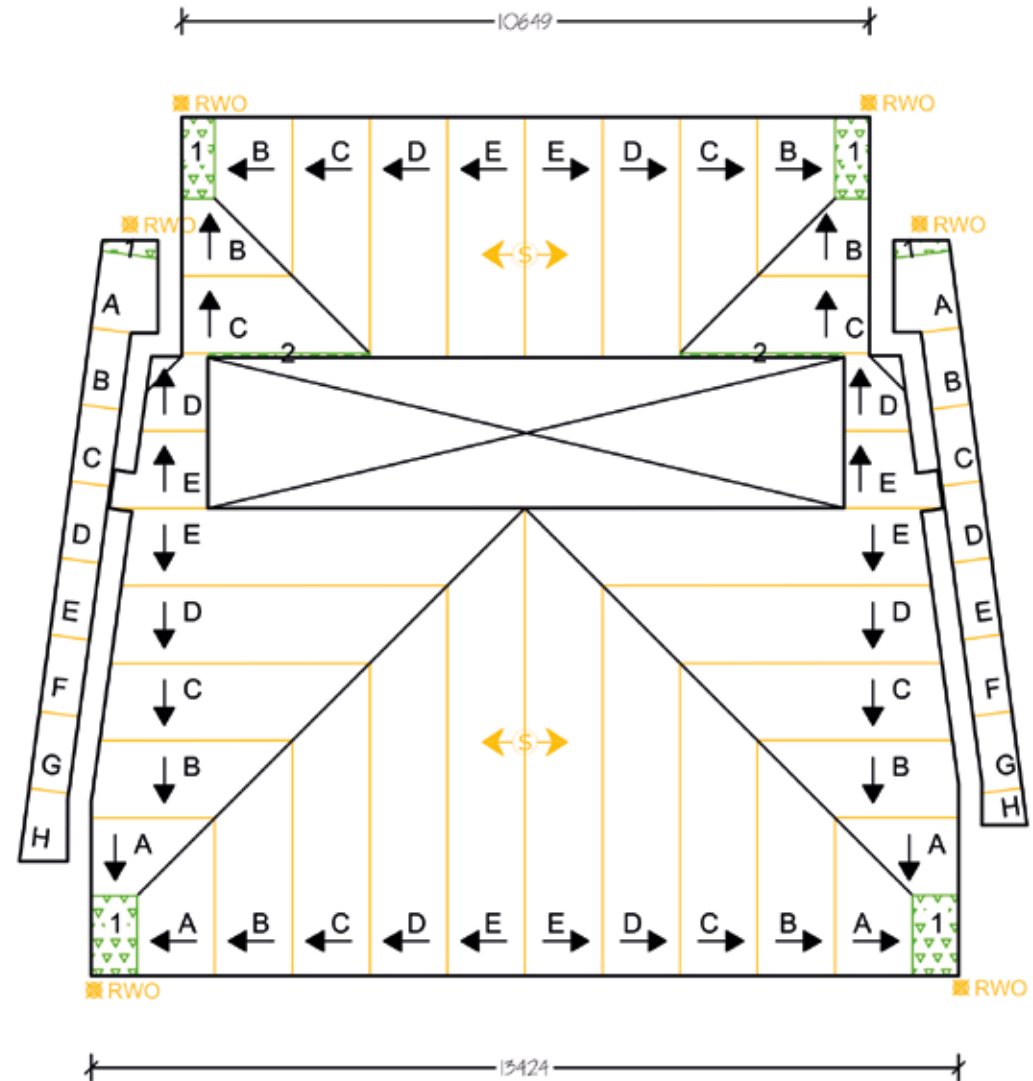
# INSULATION CTF (CUT TO FALLS)

Our technical team can help you design and deliver your next cut to falls project. We have the expertise inhouse for even the most demanding contracts and because we are independent of any one manufacturer, it means you have more choice.

Proteus Waterproofing is one of the few suppliers to have an experienced insulation arm to support its wide range of systems, which makes us the ultimate specialist, able to provide the right specification and products for every project – even those in areas where the risk of fire can be a major concern.

## Accreditations and approvals

- All products are certified to ISO 9001 and 14001 accreditation
- CE marked



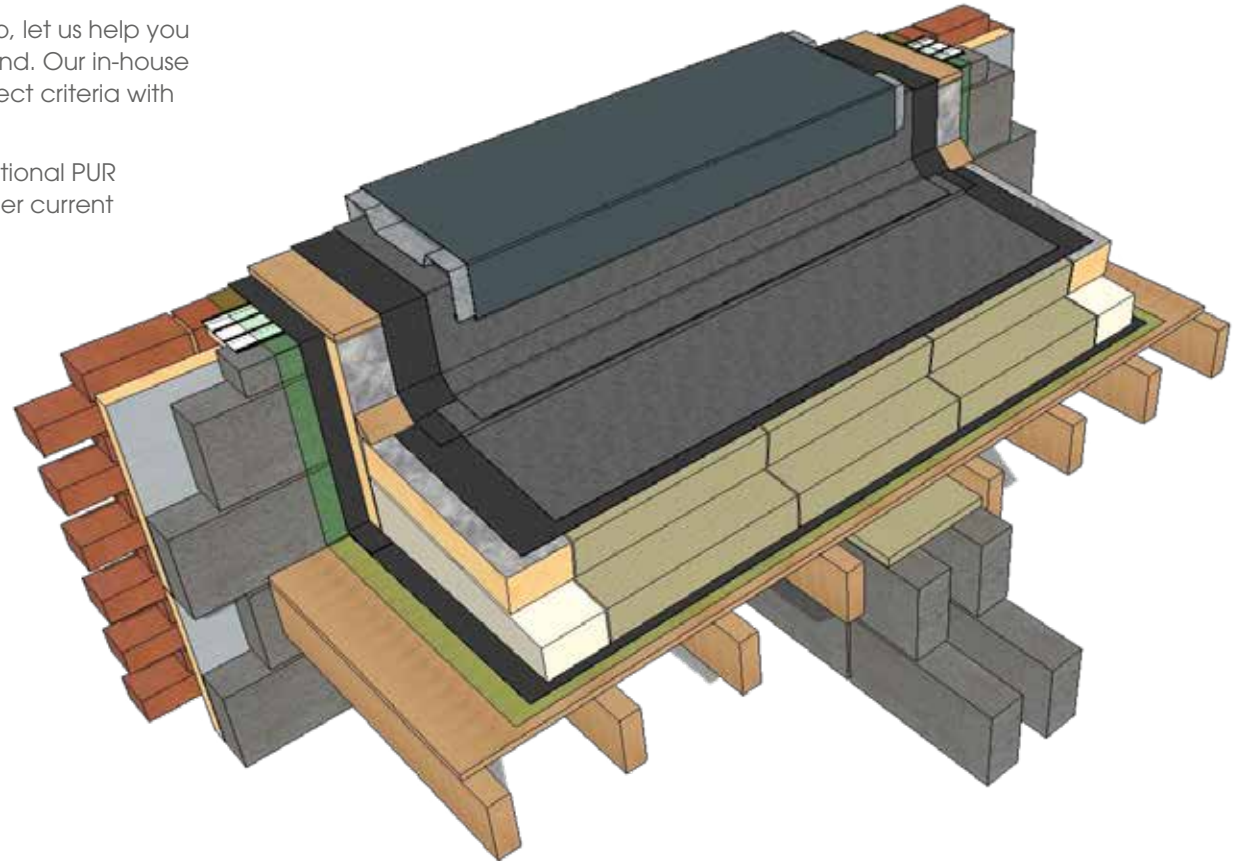
# HYBRID INSULATION

We provide a choice of all types of insulation, including mineral wool so, let us help you with the intricate design and attention to detail that your clients demand. Our in-house technical design team can overcome even the most challenging project criteria with innovative design solutions and hybrid options.

This is particularly relevant in party wall type installations where conventional PUR insulation cannot deliver the same levels of performance required under current building regulations.

## Accreditations and approvals

- All products are certified to ISO 9001 and 14001 accreditation
- CE marked



Manufactured in the UK and Europe, Proteus Waterproofing is one of the most innovative, fast growing companies in the waterproofing market. Proteus Waterproofing is a single source systems supplier, with an array of hot and cold-applied waterproofing and protection systems. The company's comprehensive product range is suitable for high performance roofing, balconies, walkways and car parks. It offers a vast range of systems, that have been engineered to meet the harshest of weather conditions and provide a lasting and robust waterproofing solution, in both refurbishments and new builds.

Experts in all forms of liquid applied and bituminous membrane roofing and waterproofing, Proteus Waterproofing is adaptable to each client's individual needs and circumstances, and offers long-term performance product reliability and a simple installation as standard.

## Total Peace of Mind

Proteus Waterproofing roofing systems are tested to the most rigorous international standards, ensuring they will outperform the initial design life. This will give your project a durable, reliable and long-lasting waterproofing finish, that will last for many years to come, providing excellent value to clients and building owners.

## Guaranteed Performance

Proteus Waterproofing presents clients with a robust choice of guarantees for its bespoke systems, from an offer that also incorporates enhanced independently-backed warranties, for total peace of mind.

For further information, please contact Proteus Waterproofing to discuss the most suitable option to meet your requirements.



### Proteus Industrial Technologies Ltd.

21a Sirdar Road  
Brook Road Industrial Estate  
Rayleigh, Essex SS6 7XF  
T: +44 (0) 1268 777871

enquiries@proteuswaterproofing.co.uk  
[www.proteuswaterproofing.co.uk](http://www.proteuswaterproofing.co.uk)

 @Proteus\_UK

Registered Office: 21a Sirdar Road, Brook Road Industrial Estate, Rayleigh, Essex. SS6 7XF.  
Registered company number: 08258719.

### Proteus Waterproofing's range of lasting and robust systems includes:

- *Liquid-applied waterproofing: Proteus Pro-System® Plus*
- *Inverted roof waterproofing: Cold Melt®, Proteus Hot Melt®*
- *High performance felts: Proteus Pro-Felt®, Ultima, Ultima Plus, Extra, Extra Plus*
- *Balconies and walkways: Pro-BW® Plus, Cold Melt®*
- *Car park decking systems: Deckmaster*
- *Coating protection: Pro-Cryl®, Pro-Solar Reflect*
- *Exterior walls waterproofing: Monosil, Monodex & Monodex Textured*

### The Proteus Waterproofing Specification includes:

- *On-going technical support*
- *Comprehensive guarantees*
- *Free roof evaluations service*
- *Roof condition surveys, reports and bespoke specifications*
- *Expert advice on low maintenance solutions*
- *Site survey and design stage involvement*
- *Thermal value calculations to building regulations part 'L'*
- *Tapered insulation scheme design*
- *Wind uplift calculation*
- *Building regulations Part B (fire) compliance options*

### The Proteus Waterproofing service package includes:

- *Detailed specifications*
- *National contractor base*
- *Technical manager inspections throughout the project*
- *Installation sign off*