



Proteus

Waterproofing



PROTEUS PRO-FELT® SYSTEMS

- High performance built-up bituminous membrane systems
- Cold flexibility (down to -25 C)
- Guarantees available up to 25 years
- Torch-on & self adhesive applications
- BBA Certified for 30 years





The Proteus Pro-Felt® Range uses advanced self-adhesive and low melt bitumen technologies. This ensures the products benefit from a fast and efficient installation both in refurbishment and new build situations, whilst meeting every client's budget and deadline demands.

- *Highly flexible*
- *Excellent at low temperatures*
- *Guaranteed up to 25 years*
- *All membranes are individually CE Marked*
- *Excellent waterproofing choice for intensive and extensive Green and Bio-diverse Roofs*
- *BBA certified*

The Proteus Pro-Felt® range of roof systems from Proteus Waterproofing offers a high-performance range of bituminous membranes, which are extremely flexible and durable.

Proteus Pro-Felt® has been designed to provide market leading performance.

Proteus Pro-Felt® is exclusively available from Proteus Waterproofing as part of the company's market leading range of waterproofing, roofing and car park solutions. The Proteus Pro-Felt® product range gives clients a long-lasting and robust waterproofing membrane, whilst providing whole 'built up system' solutions which include high performance thermal insulations and tapered roofing designs.



FIRE SAFETY: SAFE 2 TORCH



Proteus Waterproofing is a member of the NFRC and supports the Safe2Torch campaign – a risk assessment strategy from the National Federation of Roofing Contractors, designed to reduce the risk of roof fires from gas torches when installing new membranes.

In conjunction with Safe2Torch, Proteus offers guidance at the initial survey and design stage to ensure all risks are factored into the roofing specification before it is written. A simple and easy-to-use checklist is also available to contractors on site to determine whether or not it's safe to use a torch-on system.

It means we are committed to:

- **Highlighting and reporting specifications which do not conform to Safe2Torch**
- **Identifying and reducing the risk of roof fires caused by gas torches**
- **Ensuring all employees are trained in the use of gas torches and their associated risks**
- **Ensuring all supervisors or charge hands have completed the Safe2Torch checklist prior to hot works commencing.**



PROTEUS PRO-FELT® ULTIMA-PLUS FIREGUARD

Proteus Pro-Felt® Ultima-Plus Fireguard is a Torch-On mineral capsheet, which is BBA certified and has been designed to provide market leading performance in both warm roof and overlay systems.

BUILD UP

- 1 Pro-Prime®
- 2 Proteus Pro-Felt® AVCL
- 3 Pro-Bond Foaming Adhesive
- 4 Proteus Pro-Therm Insulation
- 5 Angle Fillet
- 6 Proteus Pro-Felt® Underlay
- 7 Proteus Pro-Felt® Ultima-Plus Fireguard Mineral Capsheet

KEY FEATURES

- *BBA Certified for a minimum 30 years*
- *Tested to Broof(t4) fire performance with enhanced fire-retardant properties.*
- *25 year Independent Insurance Backed Guarantee (see separate T&Cs)*

ACCREDITATIONS AND APPROVALS

- *All products are certified to ISO 9001 and ISO 14001 accreditation*
- *CE marked*



PROTEUS PRO-FELT® ULTIMA-PLUS

Proteus Pro-Felt® Ultima-Plus is a high-performance torch-on mineral cap sheet, which is BBA certified and is used in both warm roof and overlay systems.

BUILD UP

- 1 Pro-Prime®
- 2 Pro-Felt® Air-Vapour-Control
- 3 Pro-Bond Foaming Adhesive
- 4 Proteus Pro-Therm Insulation
- 5 Angle Fillet
- 6 Proteus Pro-Felt® Underlay
- 7 Proteus Pro-Felt® Ultima-Plus Mineral Cap Sheet

KEY FEATURES

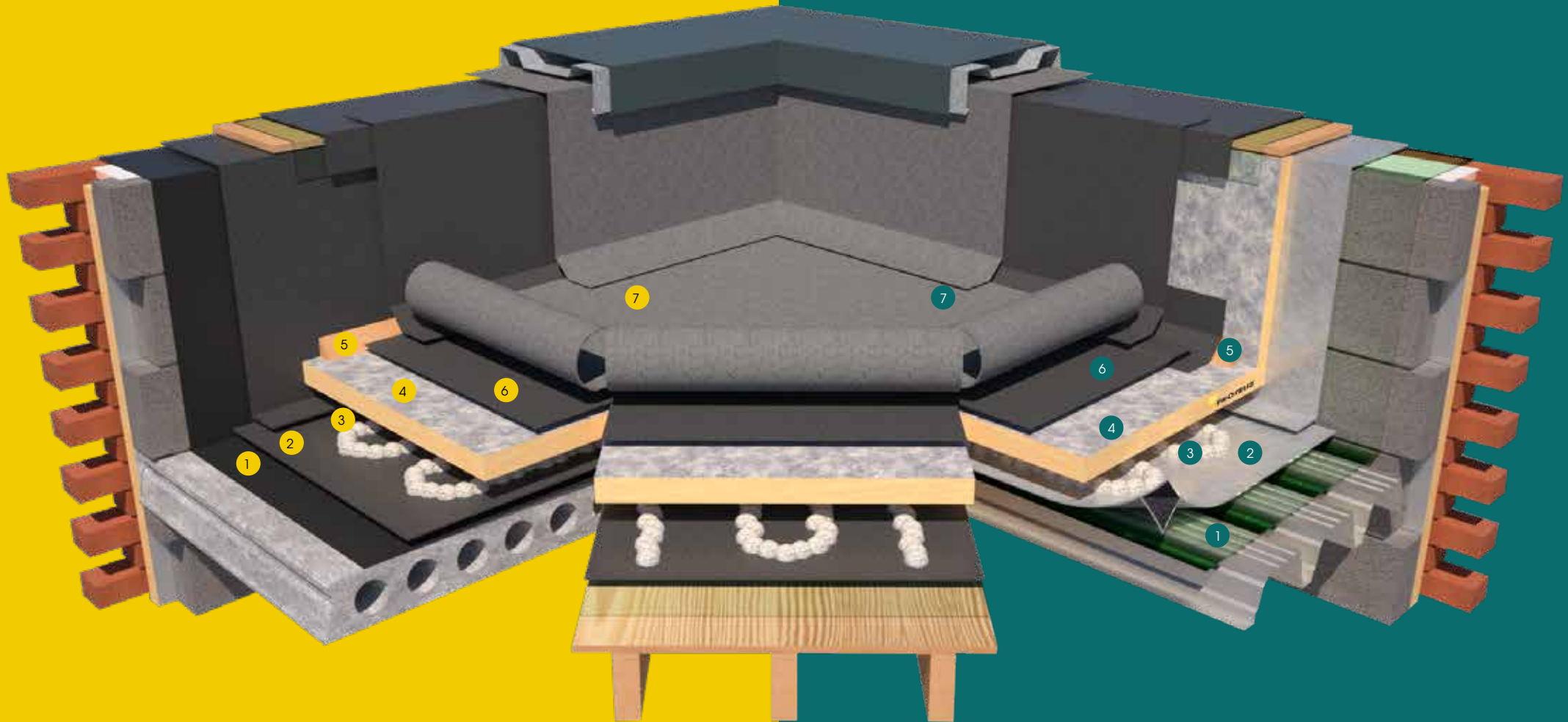
- *BBA Certified for a minimum 30 years*
- *Tested to Broof(t4) fire performance*
- *4.5kg m² Black Mineral Cap Sheet*
- *20 year Independent Insurance Backed Guarantee (see separate T&Cs)*

ACCREDITATIONS AND APPROVALS

- *All products are certified to ISO 9001 and ISO 14001 accreditation*
- *CE marked*

PROTEUS PRO-FELT® ULTIMA-PLUS FIREGUARD

PROTEUS PRO-FELT® ULTIMA-PLUS





PROTEUS PRO-FELT® EXTRA PLUS

A High Performance SBS (Styrene Butadiene Styrene) Torch Applied membrane that excels as a direct waterproofing overlay or as part of a Proteus Pro-Felt® warm roof build-up incorporating Proteus Pro-Therm insulation.

BUILD UP

- 1 Pro-Prime®
- 2 Proteus Pro-Felt® AVCL
- 3 Pro-Bond Foaming Adhesive
- 4 Proteus Pro-Therm Insulation
- 5 Proteus Pro-Felt® Underlay
- 6 Proteus Pro Felt® Extra Plus Mineral Felt

KEY FEATURES

- *Tested to Broof(t4) fire performance*
- *5Kg, m² Black Mineral Cap Sheet*
- *20-year Proteus Waterproofing Guarantee*

ACCREDITATIONS AND APPROVALS

- *All products are certified to ISO 9001 and ISO 14001 accreditation*
- *CE marked*



PROTEUS PRO-FELT® EXTRA

A cost effective Plastomeric Torch Applied membrane which excels as a direct waterproofing overlay or as part of a Proteus Pro-Felt® warm roof build-up incorporating Proteus Pro-Therm insulation.

BUILD UP

- 1 Pro-Prime®
- 2 Proteus Pro-Felt® AVCL
- 3 Pro-Bond Foaming Adhesive
- 4 Proteus Pro-Therm Insulation
- 5 Proteus Pro-Felt® Underlay
- 6 Proteus Pro-Felt® Extra Mineral Cap Sheet

KEY FEATURES

- *Tested to Broof(t4) fire performance*
- *4.5Kg, m² Black Mineral Cap Sheet*
- *15-year Proteus Waterproofing Guarantee*

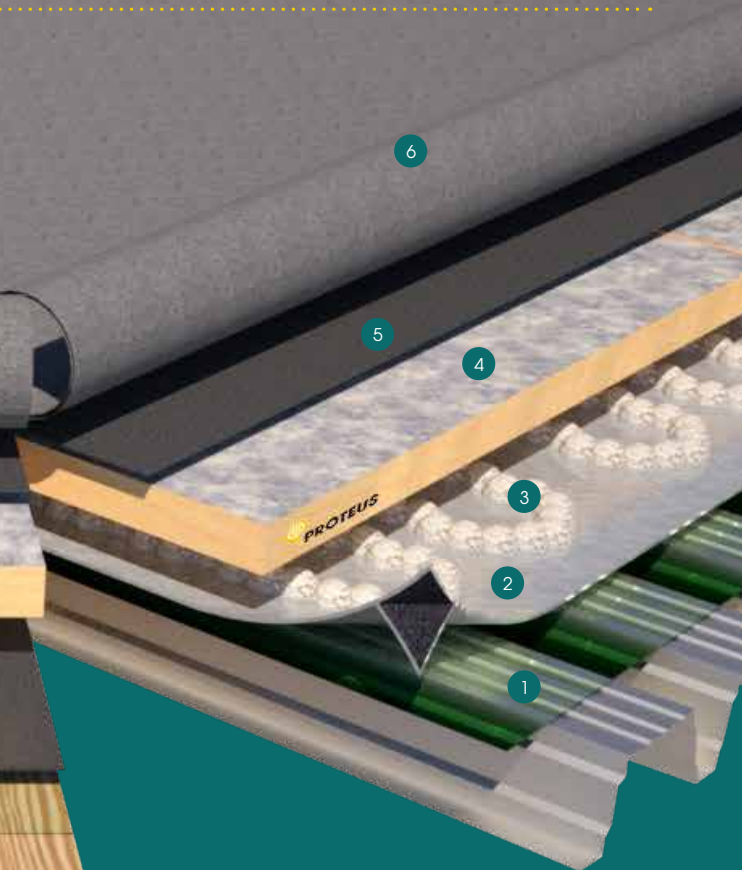
ACCREDITATIONS AND APPROVALS

- *All products are certified to ISO 9001 and ISO 14001 accreditation*
- *CE marked*

PROTEUS PRO-FELT® EXTRA

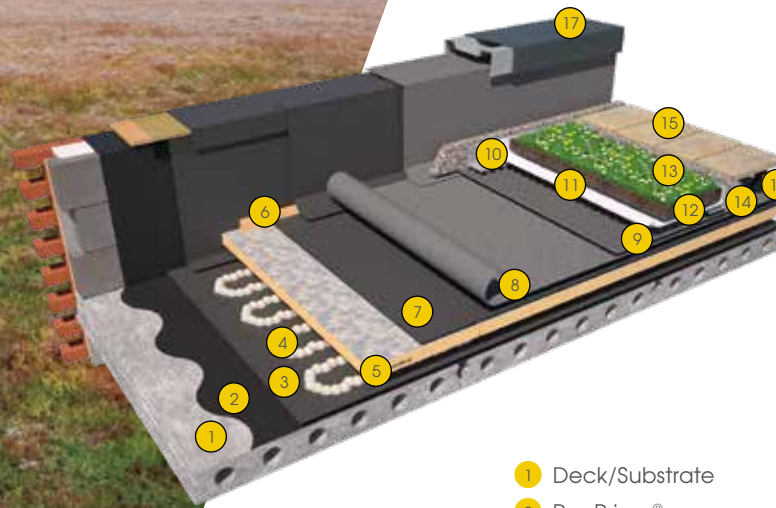


PROTEUS PRO-FELT® EXTRA PLUS



PRO-LIVING® COLD APPLIED BUR GREEN ROOF

PROTEUS PRO-FELT® ANTI-ROOT SYSTEM



- 1 Deck/Substrate
- 2 Pro-Prime®
- 3 Proteus Pro-Felt® AVCL
- 4 Pro-Bond Foaming Adhesive
- 5 Proteus Pro-Therm Insulation
- 6 Angle fillet
- 7 Proteus Pro-Felt® Underlay
- 8 Proteus Pro-Felt® Anti-root mineral cap sheet
- 9 Pro-Drainage Board
- 10 Pro-Drainage Trim
- 11 Pro-Living® Growing medium
- 12 Growing medium
- 13 Pro-Living® sedum/wildflower
- 14 20-40 wash cobbles
- 15 Hard Landscaping / Paving
- 16 Proteus Pro-Pedestal Self Levelling Adjustable Paving Pedestal
- 17 Coping System

Proteus Pro-Felt® Anti Root System

This felt system has root resistant certification, meaning vegetation roots are not able to grow through the waterproof membrane. Making it an ideal water proofing system for a green, bio-diverse, brown or any other covered /protected roof system build-up.

It means it can be laid under a green or blue roof or in any other covered or buried roof application as any roots from vegetation above it will not be able to grow through or penetrate the felt membrane.

Choosing a Pro-Living® green or bio-diverse system from Proteus can provide ecological benefits and more; energy efficiency is enhanced too. Studies show a building's internal air temperature remains more constant; hotter in winter and cooler in summer meaning air conditioning and heating systems are relied upon less.

Pro-Living® can help you to create a rooftop garden or communal space, a pleasant environment to spend time in. Terraces can offer additional living space when created using a Proteus paving system. Walkways can meander through bio-diversity.

Benefits

- *Impervious to water*
- *Excellent puncture resistance*
- *Compatible with a range of roof materials*
- *Able to withstand extreme temperatures*
- *Root resistant*
- *BBA certified*

PROTEUS PRO-FELT® SELF ADHESIVE AND OVERLAY SYSTEMS

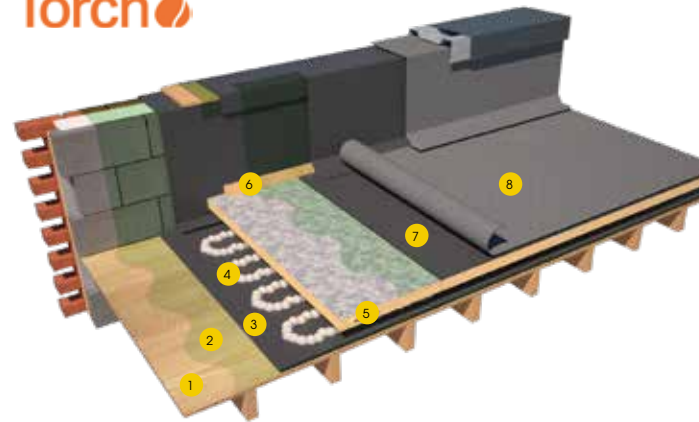
PROTEUS PRO-FELT® COLD APPLIED SELF-ADHESIVE BUILT UP ROOF SYSTEM

A complete self-adhesive system from vapour barrier to mineral capsheet makes Proteus Pro-Felt® SA particularly suitable for installation over timber decks and in areas where there is the risk of fire.

A unique self-adhesive twin sided underlay allows the mineral cap sheet and underlay to weld together forming a fully bonded system. With no self-adhesive primer required, installation time and costs are reduced.

Benefits

- **Ideal for roof areas where a torch application is not safe.**
- **Faster and more cost effective than conventional two layer/built-up self-adhesive felt systems to install.**



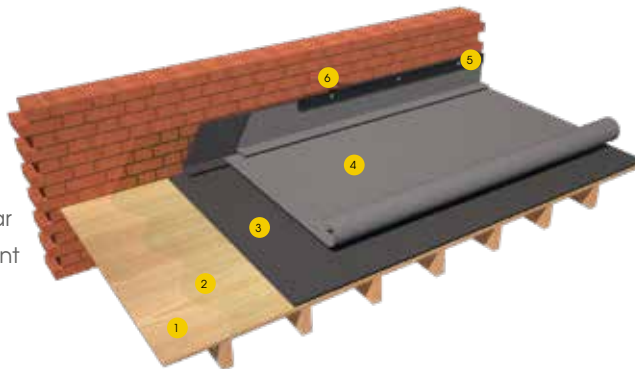
- 1 Timber deck
- 2 Pro-Prime® SA
- 3 Proteus Pro-Felt® AVCL
- 4 Pro-Bond Foaming Adhesive
- 5 Proteus Pro-Therm Insulation
- 6 Angle fillets
- 7 Proteus Pro-Felt® SA underlay
- 8 Proteus Pro-Felt® SA mineral capsheet

PROTEUS PRO-FELT® COLD ROOF OVERLAY SYSTEM

All Pro-Felt Mineral capsheets can be combined with the complete range of Pro-Felt underlays to meet client expectations for new or existing roof covering.

Note: To meet industrial codes of practice, a two-layer membrane should only be installed to an existing roof meeting minimum 0.35W/m²K U-Value or over a construction not heated or occupied.

- 1 Timber deck
- 2 Pro-Prime® SA
- 3 Proteus Pro-Felt® underlay SA
- 4 Proteus Pro-Felt® mineral capsheet
- 5 Proteus termination bar
- 6 Proteus bitumen sealant



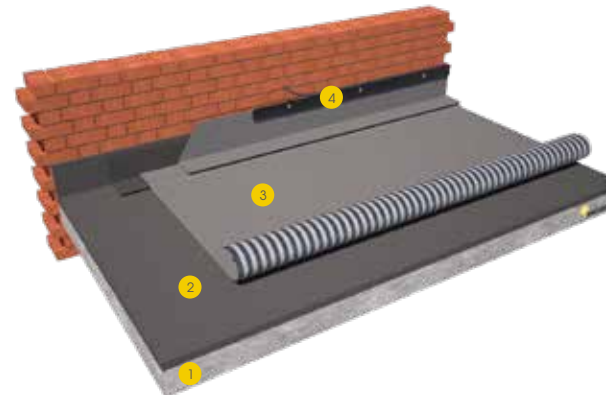
PROTEUS PRO-FELT® SL (SINGLE-LAYER) DISPERSION MINERAL CAP SHEET

This single layer waterproofing is designed to be installed over an existing roof construction coming to the end of its life avoiding the more costly option of removal and complete renew. This overlay option as a single layer protection meets Building Control Guidelines without the requirement to improve roof insulation, while providing minimum disruption to the building occupiers.

Pro-Felt SL is a partial bonded mineral cap sheet that allows moisture and vapour within the existing roof build-up to disperse under the new Pro-Felt SL rather than building up in pockets under an otherwise fully bonded membrane risking premature failure.

Note: To meet industrial codes of practice, a two-layer membrane should only be installed to an existing roof meeting minimum 0.35W/m²K U-Value or over a construction not heated or occupied.

- 1 Structural Deck
- 2 Existing Waterproofing
- 3 Proteus Pro-Felt® SL Dispersion Mineral Cap Sheet
- 4 Termination



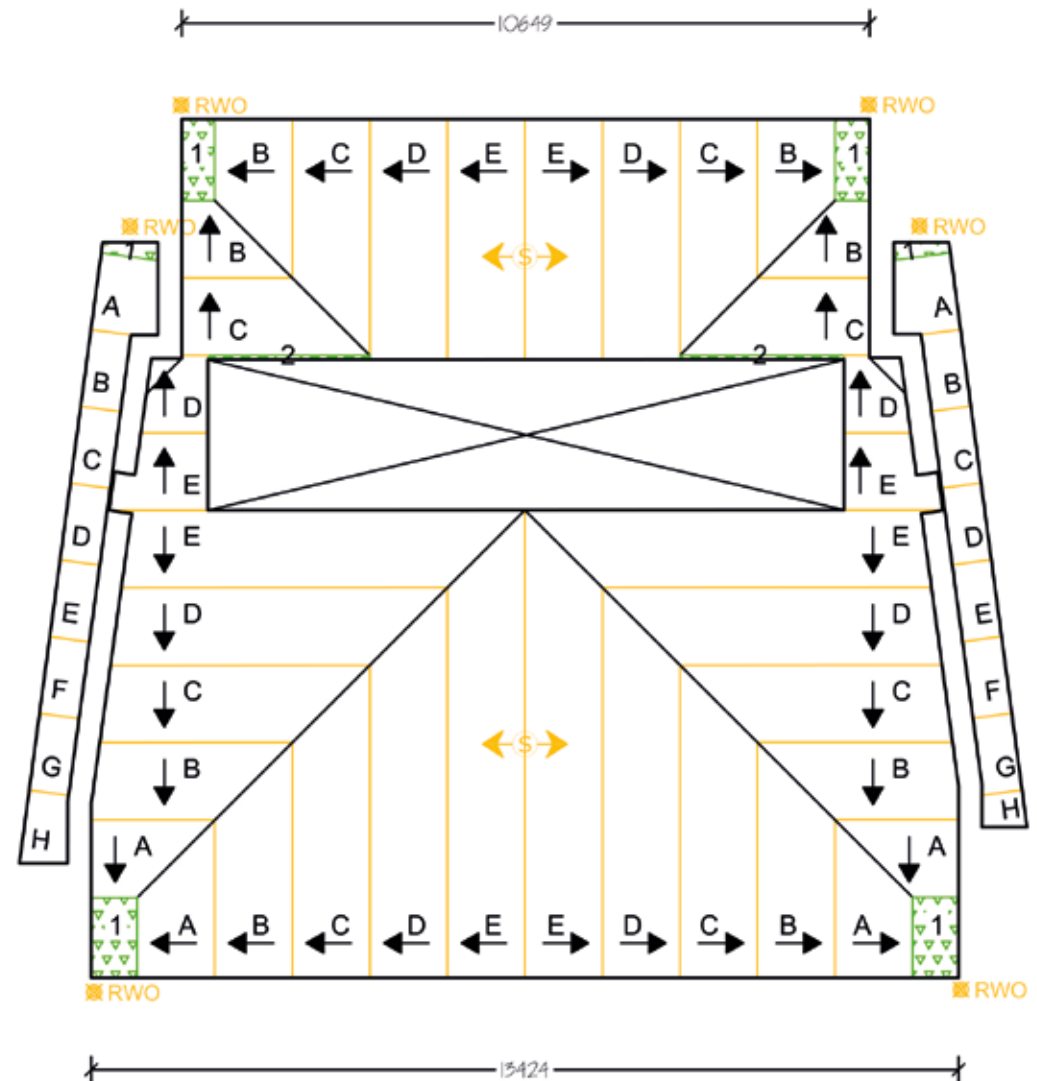
INSULATION CTF (CUT TO FALLS)

Our technical team can help you design and deliver your next cut to falls project. We have the expertise in-house for even the most demanding contracts and because we are independent of any one manufacturer, it means you have more choice.

Proteus Waterproofing is one of the few suppliers to have an experienced insulation arm to support its wide range of systems, which makes us the ultimate specialist, able to provide the right specification and products for every project – even those in areas where the risk of fire can be a major concern.

Accreditations and approvals

- All products are certified to ISO 9001 and ISO 14001 accreditation
- CE marked



HYBRID INSULATION

We provide a choice of all types of insulation, including mineral wool so, let us help you with the intricate design and attention to detail that your clients demand. Our in-house technical design team can overcome even the most challenging project criteria with innovative design solutions and hybrid options.

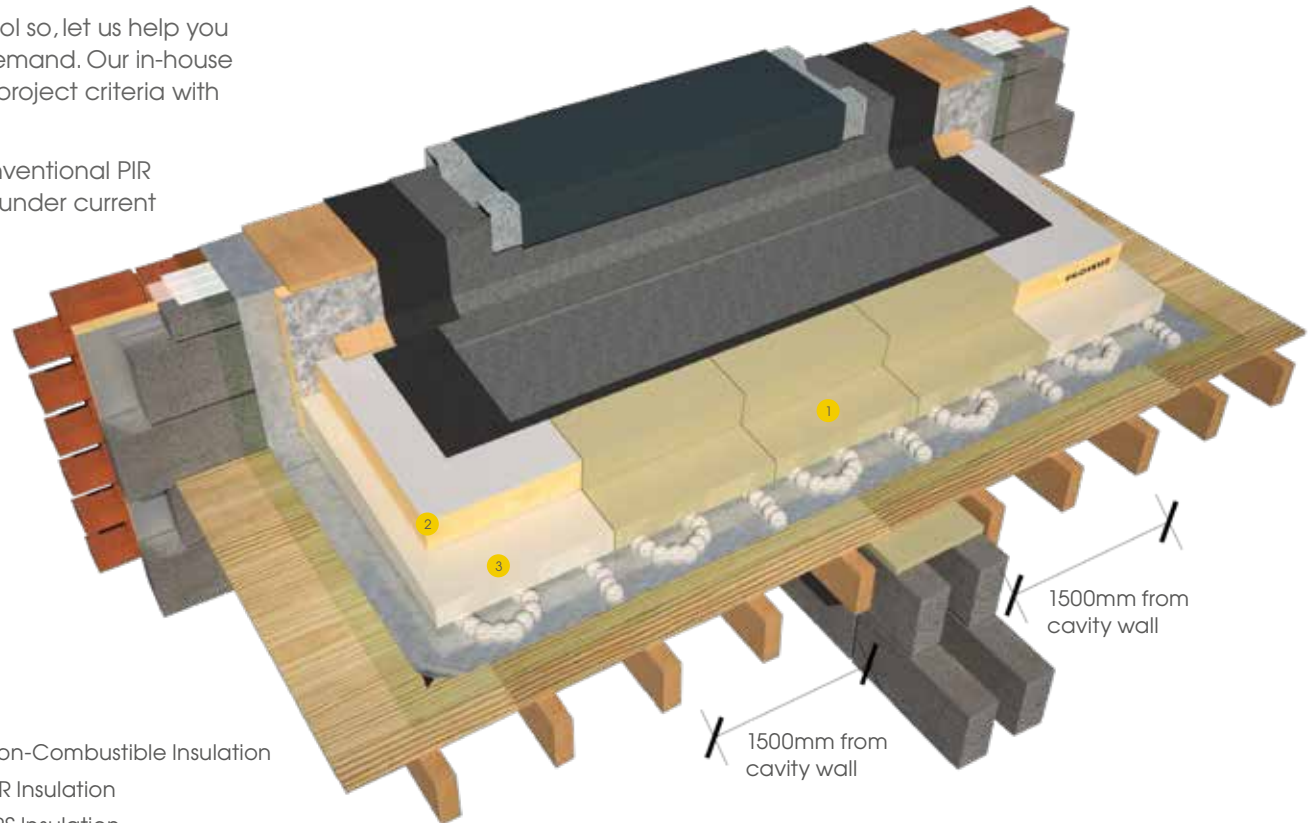
This is particularly relevant in party wall type installations where conventional PIR insulation cannot deliver the same levels of performance required under current building regulations.

Accreditations and approvals

- All products are certified to ISO 9001 and ISO 14001 accreditation
- CE marked



- 1 Proteus Pro-Therm Non-Combustible Insulation
- 2 Proteus Pro-Therm PIR Insulation
- 3 Proteus Pro-Therm EPS Insulation





Proteus Waterproofing

Manufactured in the UK and Europe, Proteus Waterproofing is one of the most innovative, fast growing companies in the waterproofing market. Proteus Waterproofing is a single source systems supplier, with an array of hot and cold-applied waterproofing and protection systems. The company's comprehensive product range is suitable for high performance roofing, balconies, walkways and car parks. It offers a vast range of systems, that have been engineered to meet the harshest of weather conditions and provide a lasting and robust waterproofing solution, in both refurbishments and new builds.

Experts in all forms of liquid applied and bituminous membrane roofing and waterproofing. Proteus Waterproofing is adaptable to each client's individual needs and circumstances, and offers long-term performance product reliability and a simple installation as standard.

Total Peace of Mind

Proteus Waterproofing roofing systems are tested to the most rigorous international standards, ensuring they will outperform the initial design life. This will give your project a durable, reliable and long-lasting waterproofing finish, that will last for many years to come, providing excellent value to clients and building owners.

Guaranteed Performance

Proteus Waterproofing presents clients with a robust choice of guarantees for its bespoke systems, from an offer that also incorporates enhanced independently-backed warranties, for total peace of mind.

For further information, please contact Proteus Waterproofing to discuss the most suitable option to meet your requirements.



Proteus Waterproofing Limited

21a Sirdar Road, Brook Road Industrial Estate, Rayleigh, Essex SS6 7XF

T: +44 (0) 1268 777871

enquiries@proteuswaterproofing.co.uk
www.proteuswaterproofing.co.uk

 @Proteus_UK

Registered company number: 08458402.

Proteus Waterproofing's range of lasting and robust systems includes:

- *Liquid-applied waterproofing: Proteus Pro-System® Plus*
- *Inverted roof waterproofing: Cold Melt®, Proteus Hot Melt®*
- *High performance felts: Proteus Pro-Felt®, Ultima, Ultima Plus, Extra, Extra Plus*
- *Balconies and walkways: Pro-BW® Plus, Cold Melt®*
- *Car park decking systems: Deckmaster*
- *Coating protection: Pro-Cryl®, Pro-Solar Reflect*
- *Exterior walls waterproofing: Monosil, Monodex & Monodex Textured*

The Proteus Waterproofing Specification includes:

- *On-going technical support*
- *Comprehensive guarantees*
- *Free roof evaluations service*
- *Roof condition surveys, reports and bespoke specifications*
- *Expert advice on low maintenance solutions*
- *Site survey and design stage involvement*
- *Thermal value calculations to building regulations part 'L'*
- *Tapered insulation scheme design*
- *Wind uplift calculation*
- *Building regulations Part B (fire) compliance options*

The Proteus Waterproofing service package includes:

- *Detailed specifications*
- *National contractor base*
- *Technical manager inspections throughout the project*
- *Installation sign off*