

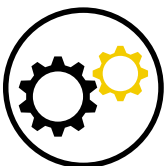


# Proteus

## Waterproofing



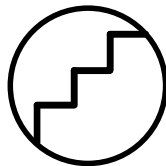
THE ONE-STOP  
SOLUTIONS  
COMPANY



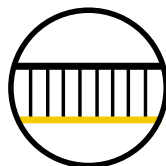
New and  
refurb projects



Green roofs



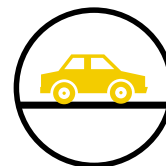
Stairwells



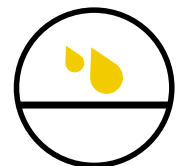
Balconies



Roofing



Car parks



And more...



# About Us

Proteus Waterproofing is the one-stop-solution provider for local authorities, housing associations and organisations in the private sector – offering a range of high performance solutions to accommodate every requirement and budget. We will solve your problems with a complete service package, and with total project pricing built around you, we will ensure there are no surprises upon project completion.

*Quality British products combined with decades of knowledge and experience.*

Proteus Waterproofing is one of the most innovative and fastest growing companies in the waterproofing market. Using UK engineered and manufactured waterproofing, coating and protection technologies, we provide an ever-growing range of solutions for refurbishments and new builds that are designed to accommodate every need and budget.

Experts in all forms of liquid applied and bituminous membranes for roofing and waterproofing, we are adaptable to each client's individual needs and circumstances. Supported by quality products reinforced by decades of knowledge and experience, we will give your project a durable and reliable, long-lasting waterproofing finish that will last for many years to come.

Complementing the wide range of liquid applied waterproofing systems, Proteus Waterproofing's product offering also includes high performance membranes. These high SBS content systems are market leading in bitumen technology, and can be used as waterproofing overlays and built-up roof systems.





# THE TOTAL SOLUTIONS PACKAGE

## Our extensive product range

Proteus Waterproofing offers market-proven and cost-effective waterproofing solutions for both refurbishments and new builds. Our comprehensive range of lasting and robust systems will ensure the outside of your building is entirely watertight to protect contents, structural integrity and your investment.

Whether you need waterproofing for a communal walkway or a watertight flat roof system, we provide the highest performance waterproofing systems to protect your building. Our product range is highly customisable and each project is supported by a bespoke service package. Starting with a detailed specification, our technical services department will support you to ensure all installations are completed to the highest standards.

We work with you to solve your problems by bringing our market leading waterproofing and repair solutions to you. Our bespoke specification will be tailored to your needs and we'll work closely with our licensed contractors to ensure the highest standard of application – providing a maintenance free solution that comes with guaranteed performance.

The environment is at the forefront of our company philosophy. We continue to research and develop our waterproofing systems to ensure higher performance and greener credentials. Sourcing products from the UK where possible and with a range of systems that incorporates both recycled rubber crumb and organically grown products in their manufacture, we will help to protect the environment and your building for many years to come.



# PROTEUS PRO-SYSTEM®

## SOLUTIONS FOR ROOFS

Proteus Pro-System® is a high performance, seamless and cold applied waterproofing membrane for flat roofs, pitched roofs and is used as a waterproofing coating to Proteus' built-up roof systems. It cures to provide completely seamless waterproof protection and has excellent thermal and UV stability, making it suitable for use in all climates.

Proteus Pro-System® does not brittle, wear away or yellow with age. It uses atmospheric moisture to trigger its cure process and unlike conventional polyurethane systems can cure under water without gassing or foaming. It also becomes resistant to rain damage and may therefore be applied in relatively poor weather without any subsequent loss of performance or durability.

When subjected to normal service conditions, Proteus Pro-System® will provide an effective waterproof barrier for 10, 15, 20 and 25 years dependent on system. All Proteus Pro-Systems® can be overcoated at the end of their designed life, therefore reducing costs and preventing product going to landfill.

### Benefits

- Totally seamless
- Highest European fire rating BROOF(t4)
- Elastomeric
- Cold applied – eliminating the risk of fire
- Excellent thermal and UV stability for all climates
- Base and top coats are the same material and UV stable







# COLD MELT®

## SOLUTIONS FOR INVERTED ROOFS



Cold Melt® incorporates recycled rubber crumb and other organically grown products to create an elastomeric, seamless, cold applied membrane that can be applied to a wide range of substrates including concrete, asphalt, timber and metal. As it exhibits extremely low odour, Cold Melt® can also be applied in confined working spaces.

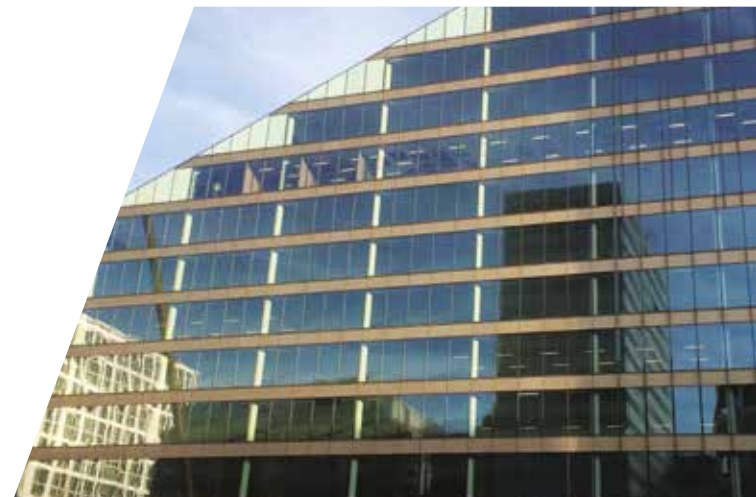
With a fast installation that can reduce building programme time, Cold Melt® waterproofing is quick, simple and safe to apply. It is purpose-made to incorporate green and brown roofs and offers an unparalleled seamless cold applied waterproof finish.

The Cold Melt® system can be installed with or without insulation and can be designed as either a podium, paved, ballasted or green roof system. Once protected from UV exposure, Cold Melt® does not embrittle with age therefore it can outlast the lifetime of the substrate on which it is installed.

[BBA certified for the life of the building.](#)

### Benefits

- Extremely low odour
- Cold applied
- Seamless
- Can be laid over flat decks
- Elastomeric
- Incorporates recycled rubber crumb and other organically grown product





## GREEN INITIATIVE

Proteus Waterproofing is committed to pursuing environmentally friendly manufacturing processes and to being ecologically minded and responsible.

We focus on products which demonstrate how we value the environment and wish to protect its future for generations to come.

In line with this sustainability commitment, the Proteus Pro Felt® range of high performance bituminous felts includes products manufactured using 100% green energy coming from solar, hydroelectric and other renewable resources.

# PROTEUS PRO-FELT®

## SOLUTIONS FOR FLAT AND PITCHED ROOFS

### Benefits

- Highly flexible
- Environmentally friendly
- Excellent at low temperatures
- Guaranteed up to 30 years
- Available in a variety of colours

Proteus Pro-Felt® is a range of high performance bituminous felt products, with an exceptionally high SBS content making them highly flexible and durable.

Available in the UK from Proteus Waterproofing as part of the company's market leading range of waterproofing, roofing and car park decking solutions, the Proteus Pro-Felt® range of roof systems can be applied quickly and efficiently to meet virtually every client's budget or deadline demands.







# PROTEUS HOT MELT®

## SOLUTIONS FOR NEW BUILD AND INVERTED ROOFS

Suitable for large flat roof decks, podiums, paved, ballasted & green roof systems, these systems have been installed on many prestigious developments for more than 40 years. Hot melt systems offer extended life expectancy, excellent waterproofing performance and competitive installation costs.

As a strong, flexible, monolithic and fully bonded system, it also has self healing characteristics to offer ultra-low maintenance. And because water cannot track under the membrane, any damage can be traced and repaired quickly and easily. It does not brittle with age, so once protected from UV exposure the membrane is expected to outlast the lifetime of the substrate on which it is installed.

### Benefits

- Excellent physical characteristics
- Very quick application process
- Fully bonded membrane
- Very flexible system
- Complementary range of accessories
- Robust membrane



# PRO-BW<sup>®</sup> (REINFORCED)

## SOLUTIONS FOR BALCONIES AND WALKWAYS

Pro-BW<sup>®</sup> (Reinforced) is a high performance, rapid curing protective waterproofing membrane for balconies and walkways. Ideal for refurbishment where structural movement has occurred or is anticipated. Pro-BW<sup>®</sup> (Reinforced) reduces installation time from days to hours.

Suitable for a variety of external applications, Pro-BW<sup>®</sup> (Reinforced) can be installed on concrete & asphalt for communal and private balconies, walkways, staircases and pedestrian ramps. As it is a cold applied installation, the system meets health and safety criteria by minimising risk to both operatives and members of the public.

As well as offering excellent UV and chemical resistance to ensure outstanding long term performance, Pro-BW<sup>®</sup> (Reinforced) also offers a wide range of life expectancy options. Pro-BW<sup>®</sup> (Reinforced) incorporates fine aggregates to provide a slip-resistant seamless finish yet still providing a surface that is easily cleaned, in a wide range of colours.

### Benefits

- Minimal disruption
- Extreme low odour
- Rapid cure times
- Effective for awkward details
- Flexible with a high level of tensile strength
- Skid-inhibiting when aggregates applied
- Durable, up to 20 years to first major maintenance
- Wide range finishes
- Wide range of substrate applications
- Easily cleaned





# PRO-BW®

## SOLUTIONS FOR BALCONIES AND WALKWAYS

Pro-BW® is a liquid applied, rapid curing protective membrane that provides a colourfast, UV stable skid-inhibiting surface for balconies and walkways. Ideal for refurbishment, Pro-BW® reduces installation time from days to hours – with a full system installed and trafficable in less than two hours.

Suitable for applications to asphalt and concrete for communal and private balconies, walkways, staircases and pedestrian ramps, Pro-BW® is flexible, hard-wearing and durable. It is cold applied with no heat required so meets health and safety standards by reducing risk to both operatives and members of the public.

Pro-BW® incorporates fine aggregates to provide a slip-resistant seamless finish yet still providing a surface that is easily cleaned, in a wide range of colours.

### Benefits

- Minimal disruption
- Extreme low odour
- Rapid cure times
- Effective for awkward details
- Skid-inhibiting when aggregates applied
- Durable, up to 20 years to first major maintenance
- A range of standard colours & finishes
- Wide range of substrate applications
- Easily cleaned





# PRO-SW (SAFETY WALKWAY) SOLUTIONS FOR SAFE WALKING

Pro-SW (Safety Walkway) is a three component elastic polyurethane system for high friction surfacing applications such as internal and external ground level walkways, car park decks, ramps and warehouses. Offering excellent resistance to yellowing and designed with the highest order of durability, impact, abrasion and chemical resistance, Pro-SW stands the test of time.

Suitable for a wide range of projects, it can be applied to concrete, polymer modified sand/cement screeds, wood and some bituminous surfaces. It provides excellent long term performance in challenging applications and is resistant to a wide range of fuels, hydraulic oils, mineral oils and solvents.

## Benefits

- Odourless
- UV, chemical and abrasion resistant
- Rapid installation
- Anti-slip
- Seamless





# MONOSIL, MONODEX & MONODEX TEXTURED

## SOLUTIONS FOR EXTERIOR WALLS

### Monosil for concrete, brick and stone

Monosil is a clear masonry impregnator which stops the ingress of rain but at the same time does not block the surface pores of the structure. It allows entrapped moisture to be warmed by the sun, turn to vapour and pass out of the structure over a period of time, enabling it to dry out.

Monosil is invisible to the eye so does not alter the look of the building. It helps to prevent absorption of oils and other liquid contamination allowing for easier removal of contaminants.

### Benefits

- Brush, roller or spray applied in two coats
- Multi-function protection
- Breathable system
- Minimises maintenance
- Imparts oil & water repellence to mineral substrates
- Enhanced dirt resistance

### Monodex Smooth – water-based elastomeric decorative coating

Monodex Smooth is a high performance water based, elastomeric, high build, decorative coating which provides protection against carbonation and water ingress, yet allows damp substrates to breathe. It is ultra-fast drying which enables two coat applications to take place on the same day and facilitates year round usage.

It resists the growth of mould and fungi and is ideal both for new construction and refurbishment projects.

### Monodex Textured – high performance, flexible waterborne textured coating

Monodex Textured is a highly engineered, waterborne, single component, acrylic-based decorative wall coating with an attractive textured finish. Due to its high build, textured composition, it is ideal for use on buildings and other structures which have a rough, uneven finish with surface defects and imperfections.



# DECKMASTER

## SOLUTIONS FOR CAR PARKS

Available for roof, basement and intermediate decks, Deckmaster provides decks with seamless waterproofing while protecting them from carbon dioxide and chloride ingress. With a rapid installation, Deckmaster offers cost and convenience benefits for both refurbishment and new build projects.

All Deckmaster waterproofing comes with a non-slip surface including a compatible line marking and signage system all of which ensure optimum practicality for all projects. Environmentally friendly with solvent-free, recycled components, Deckmaster can help to meet sustainability targets.

Available in a variety of colours to create colour-coded parking bays, traffic aisles and pedestrian walkways, Deckmaster is the ideal solution when a stunning finish is vital.

### Benefits

- Waterproofing services for roof, basement and intermediate decks
- Solvent-free, recycled materials
- Abrasion resistant
- Compatible line marking and signage system
- Quick application
- Anti-slip





# PROTEUS PRO-SYSTEM® PRO-CRYL® PRO-CEC (CUT EDGE CORROSION)

## SOLUTIONS FOR INDUSTRIAL ROOF CONSTRUCTIONS

### PROTEUS PRO-SYSTEM®

Proteus Pro-System® is an advanced, UV light stable, fully reinforced polyurethane

system which offers the perfect waterproofing overlay solution for the refurbishment of a wide range of flat and pitched industrial roofs – as well as asbestos and metal cladding, all types of gutter construction and more.

Proteus Pro-System® does not brittle, wear away or yellow with age. It uses atmospheric moisture to trigger its cure process and unlike conventional polyurethane systems, can cure under water without gassing or foaming. It also becomes resistant to rain damage and may therefore be applied in relatively poor weather without any subsequent loss of performance or durability.

#### Benefits

- Totally seamless
- High fire rating
- Elastomeric
- Cold applied – eliminating the risk of fire
- Excellent thermal and UV stability for all climates
- Base and top coats are the same material and UV stable

### PRO-CRYL®

Pro-Cryl® is a multi-purpose roof coating for extending the service life of a wide range of flat and pitched roofing systems – including corrugated asbestos, felts, glass, asphalt, slate, lead and more.

Ideal for refurbishment projects, Pro-Cryl® can be applied directly to damp substrates and rusted metal. With no primer or additional solar reflection treatment required, Pro-Cryl® offers a fast and efficient cold-application that delivers long term performance, watertightness and protection against UV degradation.

#### Benefits

- Up to 10 year lifespan
- Fast cure and installation
- Year round application possible
- Long term performance and chemical resistance

### PRO-CEC (CUT EDGE CORROSION)

Pro-CEC is the fast cure solution to cut edge corrosion commonly found on metal cladding at the edges of the sheet. As the metal is left exposed and corrodes, the simple application of Pro-CEC will prevent further peel back of the protective coating and eventual panel replacement.

Cold applied and self-priming, Pro-CEC is simple and fast to install. Offering excellent value for money with a quick and easy solution, it can be applied in temperatures from 0°C to 30°C and will provide a seamless finish that can last up to 10 years.

#### Benefits

- Fast, simple and efficient
- Cold-application
- No primer required
- No further solar reflection treatment required
- Can be applied directly to damp substrates or rusted metal





# PRO-GLAZE PU

## SOLUTIONS FOR GLAZING

### Benefits

- Easy application
- Fast-curing times
- Chemical and impact resistance
- Excellent UV stability

Proteus Pro-Glaze PU is a clear, aliphatic, moisture triggered polyurethane coating that can be applied to glass and rooflight materials. It forms an effective barrier against water penetration and the ingress of atmospheric chemicals, and will not discolour with age or prolonged UV exposure.

Combining toughness and durability with excellent adhesion, Pro-Glaze PU is suitable for use as a waterproof, anti-shatter coating over glass and rooflights. It prevents glass fragments from splintering in the event of an impact or explosion to provide exceptional levels of safety and reliability.





## SOLUTIONS FOR UV PROTECTION

### Pro-Solar Reflect

Pro-Solar Reflect is a solar reflective waterproof coating that provides long term protection against UV degradation and solar heat gain.

Offering a rapid and simple application, Pro-Solar Reflect can be cold-applied onto mastic asphalt, roofing felts and fully cured bituminous liquid roof coatings. Ideal for new-build or refurbishments, Pro-Solar Reflect extends the service life of a roof by providing exceptional water, weather and environmental protection.

#### Benefits

- Flexible, cold-applied, rapid and simple application
- Overcoat in approximately 1 hour in ventilated conditions
- Suitable for use on mastic asphalt, roofing felts and liquid roof coatings
- Resistant to industrial and environmental pollution
- Exceptional watertightness



# Proteus Waterproofing

Manufactured in the UK and Europe, Proteus Waterproofing is one of the most innovative, fast growing companies in the waterproofing market. Proteus Waterproofing is a single source supplier, with an array of hot and cold-applied waterproofing and protection systems. The company's comprehensive product range is suitable for high performance roofing, balconies, walkways and car parks. It offers a vast range of systems, that have been engineered to meet the harshest of weather conditions and provide a lasting and robust waterproofing solution, in both refurbishments and new builds.

Experts in all forms of liquid applied and bituminous membrane roofing and waterproofing. Proteus Waterproofing is adaptable to each client's individual needs and circumstances, and offers long-term performance product reliability and a simple installation as standard.

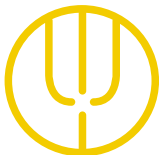
## Total Peace of Mind

Proteus Waterproofing roofing systems are tested to the most rigorous international standards, ensuring they will outperform the initial design life. This will give your project a durable, reliable and long-lasting waterproofing finish, that will last for many years to come, providing excellent value to clients and building owners.

## Guaranteed Performance

Proteus Waterproofing presents clients with a robust choice of guarantees for its bespoke systems, from an offer that also incorporates enhanced independently-backed warranties, for total peace of mind.

For further information, please contact Proteus Waterproofing to discuss the most suitable option to meet your requirements.



### Proteus Industrial Technologies Ltd.

21a Sirdar Road, Brook Road Industrial Estate, Rayleigh, Essex SS6 7XF

T: +44 (0) 1268 777871

F: +44 (0) 845 2991215

enquiries@proteuswaterproofing.co.uk

[www.proteuswaterproofing.co.uk](http://www.proteuswaterproofing.co.uk)



@Proteus\_UK

Registered Office: 21a Sirdar Road, Brook Road Industrial Estate, Rayleigh, Essex. SS6 7XF.  
Registered company number: 08258719.

**Proteus Waterproofing's range of lasting and robust systems includes:**

- *Liquid-applied waterproofing: Proteus Pro-System® Plus*
- *Inverted roof waterproofing: Cold Melt®, Proteus Hot Melt®*
- *High performance felts: Proteus Pro-Felt®, Ultima, Ultima Plus, Extra, Extra Plus*
- *Balconies and walkways: Pro-BW® Plus, Cold Melt®*
- *Car park decking systems: Deckmaster*
- *Coating protection: Pro-Cryl®, Pro-Solar Reflect*
- *Exterior walls waterproofing: Monosil, Monodex & Monodex Textured*

**The Proteus Waterproofing Specification includes:**

- *On-going technical support*
- *Comprehensive guarantees*
- *Free roof evaluations service*
- *Roof condition surveys, reports and bespoke specifications*
- *Expert advice on low maintenance solutions*
- *Site survey and design stage involvement*
- *Thermal value calculations to building regulations part 'L'*
- *Tapered insulation scheme design*
- *Wind uplift calculation*
- *Building regulations Part B (fire) compliance options*

**The Proteus Waterproofing service package includes:**

- *Detailed specifications*
- *National contractor base*
- *Technical manager inspections throughout the project*
- *Installation sign off*

