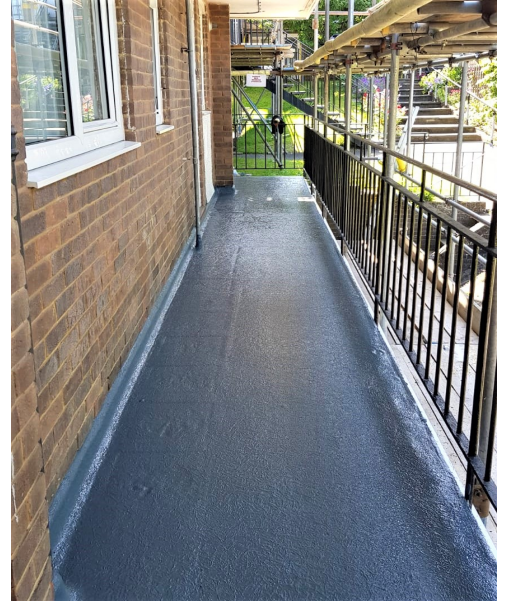




Proteus Waterproofing

Case Study: Pro-BW® Plus

Walkway Refurbishment, Knotts Place, Sevenoaks



Project Brief:

Knotts Place, a block of residential flats in Sevenoaks required refurbishment works to the asphalt communal walkways due to water penetration that had caused damage and staining to the underside of the walkways. The client required an overlay waterproof system to protect the walkways and extend the life. **Proteus Pro-BW® Plus**, a fast cure, cold applied waterproofing system and a slip-resistant finish was selected.

Key Requirements: High Performance Waterproofing

To ensure the project was finished to a high standard **Proteus Waterproofing** worked closely with the **Proteus** Approved Contractor to install the **Pro-BW® Plus** system. **Pro-BW® Plus Coating** was applied making sure the waterproofing layer was terminated into a chase. The areas were then taped off and the anti-slip finish was applied, leaving good crisp lines throughout. The system was finished by applying **Pro-BW® Plus Sealer** over the anti-slip aggregate.

Key Requirements: Quality Control

To minimise disruption to residents, particularly on communal walkways which may also form the fire escape routes, the waterproofing system needed to be low odour and fast cure. **Pro-BW® Plus** offers a return to service within 2 hours from installation. **Proteus Waterproofing's** liquid applied systems are cold installed and therefore remove the risk of fire to the building. The low noise application allowed the Approved Contractor to complete the works safely, meeting all health and safety criteria.

Key Requirements: Long Term Performance

Pro-BW® Plus is a high performance, rapid curing protective waterproofing membrane for balconies and walkways making it ideal for refurbishment where structural movement has occurred. **Pro-BW® Plus** reduces installation time from days to hours. Suitable for a variety of external applications, **Pro-BW® Plus** can be installed on concrete & asphalt for communal and private balconies, walkways, staircases and pedestrian ramps. As it is a cold applied installation, the system meets health and safety criteria by minimising risk to both operatives and members of the public.

Proteus Industrial Technologies Ltd.

21a Sirdar Road
Brook Road Industrial Estate
Rayleigh
Essex SS6 7XF

Tel: 01268 777871
Fax: 0845 2991215
Email: office@proteuswaterproofing.co.uk
www.proteuswaterproofing.co.uk