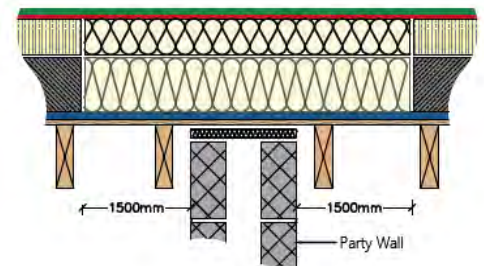


CTF Scheme, Kings Park, Harold Wood



Part B (Fire) Building Regulations

Project Brief:

This new build block of residential flats in London, required a waterproofing membrane to the main roof and terraces. Following a discussion with the client, Proteus Waterproofing specified a **Cut to Falls Scheme**, including **Proteus Pro-Felt® Ultima Plus Fireguard** and **Cold Melt®**, a low odour cold applied membrane.

Key Requirements: Main Roof

To conform to Building Regulations **Part B Fire**, the project at Kings Park needed to have non-combustible insulation installed over either side of the party walls. **Proteus Waterproofing** included the non-combustible insulation as part of the primary **CTF** insulation scheme design complete with **Proteus Pro-Felt® Ultima Plus Fireguard**. **Proteus Waterproofing** worked closely with the **Proteus Approved Contractor** to ensure the project was completed to a high standard.

Key Requirements: Terraces

The terrace areas were installed with a cut to falls scheme overlaid with a **Proteus Pro-Therm Thermal Protection Board**, complete with a 6mm fully external grade fibre cement facing to accept foot traffic and the usual loads traditionally associated with flat roofing systems. As the terraces were located within a confined space and to prevent the use of hot works on site our **Cold Melt®**, a low odour cold applied inverted roof waterproofing system was used to ensure all health and safety requirements for the project were met.

Key Requirements: Long Term Performance

Incorporating recycled rubber crumb and organically grown products, **Cold Melt®** creates an elastomeric, seamless, cold applied waterproofing membrane. The **Cold Melt®** system can include inverted roof insulation and, with or without insulation, can be designed as a paved, ballasted, green or brown roof. The membrane does not become brittle with age, is **BBA Certified** and is **manufactured in the UK**.

Proteus Waterproofing Limited

21a Sirdar Road
Brook Road Industrial Estate
Rayleigh
Essex SS6 7XF

Tel: 01268 777 871

Email: office@proteuswaterproofing.co.uk
www.proteuswaterproofing.co.uk